

**FSC AIDS BLOOD PROGRAM**—A total of 241 pints of blood was donated when the Red Cross Bloodmobile made its second visit of the school year to Florence State College on Thursday. Mrs. Charles E. Nance, Executive Secretary of Lauderdale County Chapter, American Red Cross, (left) presents certificates to Florence State College faculty members who have donated more than a gallon of blood to the Blood Bank. Seated are C. F. Huff, O. L. Peacock, President E. B. Norton; standing, Roy Stevens, R. C. Fuller, W. L. Davis and H. T. Harvey. This brings to 548 the total collected at the college within the last six months, according to Harold Hammond, Lauderdale Chapter Blood Chairman. Thursday's program was sponsored by the Cadet Officers Corps.



Florence is just a short distance from a \$1,000,000 street project. For several weeks a leading engineering firm has been conducting a survey, under orders of the State Highway Department, to learn the answer to our local traffic problems caused by the heavy travel in the central congested areas. Now, it appears, with this survey near completion, a perimeter road will be designated that will skirt to the west of midtown, by-pass the northern area of the city and interlock with the four-lane Lee Highway, thus eliminating, or at least relieving, the bottlenecks in downtown Florence. Seven points and much of the area in between. It is pointed out by city officials that this circular four-lane road will provide for a free and easy flow of traffic north and south and contribute generally to the relief of the congestion caused by the greatly increased traffic converging from both sides of the river. This project, which will be financed solely with state and federal funds and will cost the city nothing, comes as the result of the efforts of city officials to solve one of its most vexing problems. We feel that every citizen should do everything possible to aid in bringing about the solution to one of our most exasperating headaches and we commend the city officials for their untiring efforts.

Our congratulations to the Bank of Lexington, President Chas. P. McMeans, the other officers and directors, the bank personnel and especially, the customers of this progressive financial institution upon the recognition it has just received for its standing among the banks of the nation. From its most recent financial statement the American Banker, the bankers' trade paper, has found that a gain of 484 places in the standing among the nation's 7900 banks has just been recorded. Long recognized as one of the finest rural banks in the entire United States its present standing among all the banks is most gratifying to the citizens of this area.

A most important election is just two weeks away and as yet little interest has been shown by the people as a whole. Maybe we'll get steamed up shortly.

We were taken to task over our recent discussion of the proposed four-day week and our mention that Robinson Crusoe was the only person who could get his work done by Friday. This person said that he knew a lot of people already working a four-day week, though it took them five or six days to do it. We won't argue.

Someone has pointed out that, despite inflation, a penny for most people's thoughts is still a fair price.

An employee in the Income Tax Division of the Internal Revenue Department (pardon us for mentioning it at this time) reports that in one tax return where dependents are listed, one man typed in the blank opposite his wife's name headed "relations." The word: "Strained."

The friends to be valued are the very few who "guess" it's time to go—and do.

You'd never guess it by the flood of dog food advertising, but there are actually 2,000,000 more cats than dogs in America. If you don't believe us, you count them.

## Plea For Return Of U.S. Fliers Rejected By Cuba

### One Flier Says Castro Cooked Up Flight To Embarrass United States

A plea by the United States for the return of two American fliers imprisoned by Fidel Castro's government met with a flat rejection by Cuba's bearded dictator, it was revealed Monday by the State Department. The two fliers, William J. Scheragles, 34, and Howard Rundquist, 33, are subject to court action for a crime against Cuba, reports stated. U. S. authorities said they had obtained a statement from Scheragles that Castro's government had cooked up the plot to embarrass the United States. His refusal to return the men has heightened Washington's suspicions that this might be true.

Cuba has accused the two fliers of trying to "spiral" one of the President Batista's henchmen out of the country. The United States had wanted to investigate the two men for possible violation of American laws in making a secret flight out of the country without proper clearance, etc.

Cuba protested a U.S. clampdown on the sale of helicopters to her government and the U. S. reply said the embargo on arms to Caribbean countries had affected Batista's regime. Arms shipments had been denied Batista before Castro came into power.

The U. S. note to Castro's government expressed regret that it had not restored peace and tranquility to the Caribbean area. In another note it rejected as unfounded a Cuban charge that former Batista men are employed at the U. S. Navy base at Guantanamo.

A third U. S. note turned down a request by Castro's government to keep U. S. fruit inspectors in Cuba. The note explained that the inspectors were needed elsewhere and Cuba had been notified of this in December and that they would be withdrawn by the end of February. The department of agriculture inspectors had been sent to Cuba to aid shippers to comply with U. S. marketing standards for fruits and vegetables.

The Lauderdale County Humane Society will hold its quarterly meeting in the auditorium of the Municipal building Monday night at 7:30 o'clock, President George Hobbs announces.

## Late News

A 265-pound spherical satellite called Transit 1B was successfully launched from Cape Canaveral, Fla., at 7:03 a.m. Wednesday. It is designed for study of the feasibility of using satellites as global all-weather navigation stations.

Western allied foreign ministers met Tuesday in Washington to begin a series of pre-summit talks starting with a blunt reminder to East-West leaders that their differences are not likely to be settled at a single conference. Attending the meeting are Secretary of State Christian A. Herter, British Foreign Secretary Selwyn Lloyd, French Foreign Minister Maurice Couveur, German Foreign Minister Heinrich von Brentano.

Alabama Tuesday asked Congress for river funds and at the same time laid plans for a power drive if the House Appropriations Committee rejects a \$200,000 request for the Alabama-Coosa river. Reps. Kenneth Roberts and Armistead Selden were the chief spokesmen for the Alabama Congressional delegation, led by Gov. John Patterson. Citizen leaders were Robert F. Henry, Montgomery and Jack Warner, Tuscaloosa, respective presidents of the two river associations. The biggest block is Miller's Ferry and dam on the Alabama-Coosa; however, President Eisenhower requested no money to finish planning what is needed there.

It was disclosed Tuesday that the U.S. plans an atomic-assisted Saturn rocket capable of hurling a 72,000-pound payload into orbit or making a round trip to the moon. Missile expert Werner von Braun said that the rocket would be an advanced version of the Saturn space vehicle with a nuclear-powered upper stage. He also predicted that the booster would be flight tested in 1968 or 1969 although a ground test of all eight chambers is scheduled during the next two months.

## Contract Is Let For FSC Dormitories

It was announced Wednesday that Florence State College officials have approved the awarding of a contract to the G. E. Bass Construction Company of Jackson, Miss., for the construction of a student union center, and men's and women's dormitory buildings in the amount of \$1,244,715.

In announcing approval of the Mississippi firm's bid, Dr. E. B. Norton, president of Florence State College, and Northington, Smith and Kranert, architects, stated contracts for construction had been mailed to the Bass firm and as soon as signed would be returned for signing by Florence State officials.

Following signature of both parties on the contract it must then be approved by the State Department of Education and the Home Finance Agency. It was stated by the architect that this was mainly a matter of routine and work should be started within the next several weeks.

Earlier it was revealed that the first bids had been higher than available money and that the college was forced to apply for a higher loan. Dr. Norton stated that since this was done it was necessary to get the approval of these agencies.

Included in the contract to the Bass Construction Company is a 224-bed men's dormitory, a student union center, and a 60-bed girls' dormitory.

The buildings will be completely modern and air-conditioned. Completion date was not given.

## Lexington Spring Festival Will Be Held April 27-28

### Annual Event Will Be Highlighted By Coronation Ceremony

The Annual Spring Festival at Lexington School will be presented on April 27 and 28, in the school gymnasium.

The Festival is an all-school presentation which is held each year at the culmination of a contest which is held between classes. The honorees will be crowned "Mr. and Miss Lexington School" by the 1959 King and Queen.

The contest to determine the honorees is now in progress with contestants and their escorts as follows:

Grades 1-2-3—Nancy Putman, Mike Murks; Grades 4-5-6—Agnese Thigpen, Calvin Cox; Grade 7—Frances Butler, Glenn Parker; Grade 8—Barbara Williams, Jeffrey Hammond; Grade 9—Carolyn Hughes, B. H. Parker; Grade 10—Kay Shelton, Danny White; Grade 11—Nancy Hammer, Gerald Howard; Grade 12—Joyce Smith, Gilbert Hammond.

The Festival will open with the coronation which will consist of the procession and the crowning of Mr. and Miss Lexington School. More than 300 pupils from grades 1-12 will participate in the program which is based around the theme "Down Memory Lane." The program will consist of a variety of colorful numbers depicting songs, events, and personalities of the last century.

The performance will begin at 7:30 each evening. Since seating space is limited and the demand for tickets is great it will be necessary for all admission tickets to be bought in advance. Tickets are now on sale and may be purchased through Lexington students.

## LEGION MEET TONIGHT

Florence Lauderdale Post No. 11, American Legion, will meet at the Post home tonight at 7:30 o'clock when several important business matters will be discussed, Commander Frank V. Potts announced.

After the meeting light refreshments will be served to those in attendance.

## Reynolds Metals Reports Increase In Total Assets

### Net Income In 1959 Is Highest In History; Industry Expanding

Assets of Reynolds Metals Company increased nearly \$100 million in 1959, according to the Annual Report to shareholders issued March 31.

Total assets increased from \$832,657,215 to \$931,365,383. The increase came mainly from a \$60 million boost in current assets and acquisition of \$40 million worth of capital stock of the British Aluminum Company Limited.

Reynolds interest in British Aluminum stock amounts to 47 per cent of the stock. Tube Investments, Ltd., of England, owns 49 per cent.

In addition to its substantial interests in Great Britain, Reynolds holds interests varying from 51 to 100 per cent in aluminum manufacturing companies operating in Canada, the Philippines, Mexico, Columbia and Cuba.

Reynolds on February 10 announced its 1959 net income was highest in its history, \$44,761,000, compared to \$39,364,000 in 1958. Sales also set a new record, \$489,263,000, compared to \$445,549,000 in 1958.

Breakthroughs into new markets are moving aluminum from a job order business to a mass production industry. Mr. Reynolds said in the Annual Report.

Indications of this, he said, include "the introduction of aluminum automobile engines, the construction of aluminum gondola and hopper railroad cars, the widespread acceptance of aluminum for home construction, the adaptation of can-making techniques to aluminum, the continuing progress in finding new uses for aluminum in the wire and cable industries."

## Lexington Bank Shows Progress

### Phenomenal Gain By County Institution Is Revealed In Telegram

A gain of 484 places in its standing among 7900 banks in the nation reveals that The Bank of Lexington is among the most progressive institutions of its kind in the nation.

A telegram reporting this progress was received by this newspaper from Clinton Axford, editor of the American Banker.

The Bank of Lexington which reported deposits of \$2,726,606 on December 31st gained 484 places in its standing among 7900 largest banks in the United States during 1959 and now ranks 7855th largest in size compared with 8339th place at end of 1958. This is revealed in 1960 annual roll call of largest banks in United States published today, April 11th by Daily American Banker of New York which is the trade newspaper of banking business. There are 14,000 banks in the United States.

Officers of the Bank of Lexington are: Charles P. McMeans, president; D. T. Wilcoxson, chairman of the board; Luther King, vice president; B. A. Porter, cashier; Raleigh Nix, Jr., assistant cashier; Virginia McMeans, assistant cashier.

Directors are: Charles P. McMeans, D. T. Wilcoxson, B. A. Porter, Eugene McMeans, Neil Wilcoxson, Luther King, William E. King, Wallace H. Thompson, and Sam Hammond.

## WOWL Winner Of '59 Safety Award

Howard Pile, president of National Safety Council today notified William A. Mapes, vice-president-general manager of WOWL Radio, Florence, that the station has been voted the National Safety Council Award of 1959. WOWL Radio has received the National Safety Council Public Interest Award each year since 1954. This year's award marking the sixth consecutive time that WOWL Radio has been so honored.

The Public Interest Award was established in 1948 to honor leadership, initiative and originality in the furtherance of accident prevention by the mass media of communication. WOWL Radio will receive a plaque signifying the Public Interest Award and is also being considered for the Alfred P. Sloan Award for highway safety which will be judged at a later date. WOWL Radio was a winner of the Alfred P. Sloan Award in 1954.

## KNIT SHOP OPENS ON NORTH PINE

The Knit Shop is a new business opened recently in Florence at 209 North Pine Street by Gladys Bland and Juanita Chambers. The new shop features Pringle sets and needle point as well as all of the known brands of quality yarns.

They invite the general public to visit the new shop where instruction in all types of knitting is available as well as all kinds of knitting supplies.

Mr. and Mrs. Sam Hardie, Jr. and Mr. and Mrs. Eugene McMeans have returned from a vacation stay at Hollywood Beach, Fla.

## Civil Rights Bill Returned To House After Senate Approves Measure By Vote Of 71 To 18



**UNLIKELY NEGROES CAN VOTE IN 1960 GENERAL ELECTION**  
House leaders in Washington said Tuesday they hoped the civil rights bill, returned to the House Saturday by the Senate after approval by that body 71 to 18, would be ready for President Eisenhower's signature later this month. It was admitted however that opponents in the House could delay final action even longer.

If the embattled measure becomes law with the provisions it now contains, in particular the voter registration law, it will be too late for Negroes to register for the Democratic party elections in May, most southern states holding Democratic party primaries then. The bill, as passed by the Senate, sets up a time-consuming registration procedure making it impossible to register Negro voters in time for the May 3 primaries, it was pointed out.

With respect to Alabama state law, it forbids an county registration boards from adding new voters, white or Negro, to the list within 10 days before an election. A proviso in the civil rights bill states that voters must qualify under state law so it is right to assume that officials would question any new voters certified by federal referees within the 10-day registration period.

Another time-killing factor is that the Attorney General must rule on whether or not discrimination exists in a given locality before ruling on what civil rights procedure to follow under the new law.

In Alabama the court sends the list of applicants to the state attorney general giving him 10 days to show why Negroes should not be registered. If the state can produce evidence to contest the applications then the judge must hold a hearing, all of which takes time.

But Alabama Negroes may not even vote in the November general election this year, since no one, white or colored, can vote in any election year unless they are veterans or otherwise exempt from poll tax, or unless they paid their poll tax before Feb. 1, 1960.

## More Cotton To Be Planted This Year In County

It is estimated by county agents of both Colbert and Lauderdale counties that both counties would have more cotton planted this year than last year and called for those farmers who were assigned extra acreage to get it in the soil.

In Lauderdale, the regular allotment is 27,449 acres plus 1,148 acres assignment by the State from other counties.

L. T. Wagon, Lauderdale County agent, said, "We definitely will plant more cotton this year than last and should go a couple thousand acres higher, if everyone does what's expected of them." Last year, only 25,675 acres were planted in Lauderdale County.

Initial planting in the area from Cloverdale to the Bend of the River in Lauderdale is going on this week.

Wagon further urged farmers to get all of their cotton planted by the end of April.

## COUNTY SPELLING BEE TO BE HELD APRIL 23

The Lauderdale County Spelling Bee will be held in the American Legion Post Home on Saturday, April 23, 9:00 a.m. All students through the eighth grade are eligible, including city, county, Mars Hill Catholic and the Training school. H. Grady Richards, chairman, arranged with the sponsoring agent to hold the contest on Saturday, April 23.

## Theatre Program

**SHOALS—Florence**  
Thurs-Fri-Sat., April 14-15-16  
WHEN COMEDY WAS KING—starring Charles Chaplin, Laurel & Hardy, Buster Keaton, Harry Langdon, Charlie Chase, The Keystone Cops, and many others.

**SUN—Mon., April 17-18**  
THE THIRD VOICE—starring Edmond O'Brien, Julie London, Laraine Day, and others.

**MAJ.—Thurs., April 14-15**  
AND JUSTICE AND CARYL CHESSMAN—the electrifying 15-minute documentary that is the talk of the nation.

**WED.—Wed., April 19-20**  
MASTERS OF THE CONGO JUNGLE—CinemaScope, DeLuxe Color, stereo, phonic sound.

**CINEMA—Florence**  
Thurs., April 14  
THE THREE FACES OF EVE—starring Joanne Woodward, Lee Remick, David Wayne, and others.

**MAJ.—Thurs., April 14-15**  
MR. ALLISON—CinemaScope, color, with Robert Mitchum, Deborah Kerr, and others.

**FRI.—Fri., April 15-16**  
ONCE UPON A HORSE—with Dan Rowan, Dick Martin, Alan Fawcett, and others.

**SUN.—Sun., April 17**  
THIS HAPPY FEELING—CinemaScope, color, with Debbie Reynolds, John Cullum, and others.

**HERITAGE—CinemaScope, color, with Will Rogers, Jr., Maureen O'Sullivan, and others.**

**VERBOTEN—Thurs., April 14-15**  
DANIELS—once a Mixman in the Mix Department and now a Mechanic in the Maintenance Department.

The Sheffield plant currently has a payroll of about 420 employees, including approximately 320 hourly personnel.



**LOUISIANA DEMONSTRATION**—Some 2,500 Negro demonstrators stand on the steps of the state capitol, Baton Rouge, La. They represent part of a nationwide passive resistance movement protesting segregation.

# The Florence Herald

Darnall &amp; May, Publishers

MARCY B. DARNALL  
1872-1960

Editor: 1922-1960  
 Managing Editor: HAROLD S. MAY  
 Advertising Manager: OSCAR D. LEWIS  
 Production Manager: ALBERT L. MARTIN

**SUBSCRIPTION**  
 Per Year, In Rural Area \$2.00  
 Per Year, In Urban Area \$2.50  
 Per Year, Outside Trade Area \$3.50  
 Entered as second class matter at the post office at Florence, Alabama, under the Act of March 3, 1897.



## What About Cotton?

The recent releasing of cotton acreage for ASC reassignment will result in a considerable increase in income according to our agricultural economists. However, there are other phases of the cotton situation that are equally important to our economy the primary one being what is cotton going to bring. It is one thing to grow cotton and another to sell it at a profit.

Rep. Robert E. (Bob) Jones charges that current farm legislation could mean acute distress or even ruin for cotton farmers during the next crop year. Hence the Eighth District congressman has introduced what he terms emergency legislation to stabilize the cotton price support for the 1961 crop. Jones said his bill would put a floor of 75 per cent of parity for the 1961 crop and postpone a change in the cotton price support base until 1962. This measure would amend sections of the Agriculture Acts of 1949 and 1958. The Jones bill would strip Secretary of Agriculture Benson of authority to reduce parity and allotments for cotton for the 1961 crop.

Jones explains that price support has been reduced from 90 per cent of parity in 1955 to 75 per cent for 1960 choice A cotton. Present law would permit the Secretary to drop price supports to 70 per cent next year, which could mean reductions of \$9 or \$10 a bale. Changing the middling 7/8 inch base could add further reductions of from \$4 to \$5 a bale. In addition, the Secretary has authority to cut parity to 65 per cent in 1962.

Farmers are now producing a bale an acre on land formerly yielding 200 pounds or less but crop costs have run ahead of production and are in an upward spiral. Alabama farmers cannot spend more to make a 1961 crop than they did this year and still take \$12 to \$15 a bale less, Jones points out.

The agriculture Act of 1958 fixed the minimum level of the national cotton allotment acreage for any year at 16.3 million acres. It also fixed price supports, considered necessary to satisfy many cotton producing areas and groups.

The time is approaching when some of these provisions will affect the 1961 crop. It is clear that the 1958 Act authorizes reductions in the price of cotton, far beyond what our farmers can absorb reasonably. In addition, the allotment acreage for 1961 may be reduced more than a million acres, compared with 1960. This would result in the lowest cotton allotment in the 27-year history of the crop control programs.

We commend Congressman Jones on his realistic approach to this very serious problem facing our cotton growers and the national economy as well. The bill should be supported.

## What To Write About

It must be remembered that a Congressman's first obligation is to his constituents. His big problem is to get re-elected, and much of his time is taken up with satisfying the demands of those who have sent him to Washington. Their views are always given first place in his thoughts. Accurate and useful information sent to him by a voter in his district is always appreciated. He welcomes hearing from "back home" because it shows him the people know he is alive and are interested in what he is doing. Until we realize our representatives in Congress want and welcome our views and we take the trouble to communicate frequently, our relations in Washington will not be what they should—or ought to be. Remember, you don't have to wait until you have a complaint to write to your Senators and Representatives. They're human too, and a pat on the back is appreciated by them as it is by you, and a slap in the face arouses their anger as readily as yours. Don't gripe—WRITE!

And when you do write here are some worthwhile tips—  
 (1) Keep your letters as brief as possible. (2) Tell the essentials about yourself or your business. (3) Be forthright. If you are for something, say so. Don't beat around the bush. (4) Avoid emotion. Prove your case with facts and figures. (5) Be reasonable. Seek only possible things. (6) Speak for yourself. Use your own stationery and letter style. (7) Be courteous: compliment him on a good speech or thank him for a good vote, and recognize his staff too. (8) Request action: Your man is elected to do something. (9) Ask for an answer: You have told him where you stand. Ask him where he stands. (10) Don't stop with one letter. Keep your congressman informed of your views on all important legislation.

Your spokesmen in the national government cannot do a good job of representing you unless they know and understand your views and you, in turn understand their problems. They need and want the opinions of all their constituents—if they can get them—regardless of party affiliations.

## Weekly Schedule Of Bookmobile

The Florence-Lauderdale Public Library and the Sheffield Public Library will be closed Easter Sunday, April 17.

Monday, April 18—Killen, Rogersville: Killen School, 8:15-10:45; Rogersville High School, 11:10-11:30; Rogersville Elem. School, 11:25-1:00; East End Negro School, 1:20-1:55; Rogersville Post Office, 2:20-2:30; Shoals Creek Grocery, 3:00-3:05.

Tuesday, April 19—Cloverdale Road: Mars Hill School, 8:15-9:20; Underwood School, 9:40-10:50; Lovelace Home, 11:05-11:15; Cloverdale School, 11:30-1:15; Garrett's Store, 1:20-1:25.

Wednesday, April 20—Jackson Highway: Loyd Cox Store, 8:20-8:30; McGee School, 8:35-9:15; Ebenezer School, 9:25-9:45; Sweet Gum School, 10:30-10:20; Palestine School, 10:35-10:55; T. M. Rogers School, 11:05-1:40; Frigg Home, 1:05-2:00; Kennedy Home, 2:05-2:15; Phillip's Store, 2:25-2:35.

To remove lipstick stains, rub the cloth with vaseline or glycerine, then launder as usual.

## Bank Executive Attends Meeting

Mrs. Dzial Represents First National, Florence At Credit Conference

Mrs. Lutie Mae Dzial, Assistant Vice President of The First National Bank of Florence, returned recently from Chicago where she attended the National Installment Credit Conference of the American Bankers Association. Mrs. Dzial is head of the Installment Loan Department of the First National Bank of Florence.

Over 1800 bankers from 49 states, the District of Columbia and Canada attended this meeting which marked the 50th anniversary of installment credit as a commercial bank lending activity.

With installment credit outstanding currently pushing the \$40 billion mark, bankers attending the conference looked back on the experience gained during the past 50 years, and also took a long look ahead at future operations in the financing of consumer goods.

## In The Week's News

### Space Agencies In Shake-Up

President Eisenhower last Wednesday, April 6, shook up the space-age defense program to provide more Atlas missiles, speed the satellite warning system and point the way toward additional Polaris atomic submarines. Funds for the missile and satellite projects will be provided by cutting back two systems, the Bomarc and Sage projects, designed for defense against attacking bombers.

### Men Arrested For Beating Girl

Four men of the Bessemer area were arrested on April 6 on assault and battery charges in connection with the beating of Miss Barbara Espy, of Alliance, a 19-year-old former Wac. Miss Espy swore out warrants for the men, charging they were among the group who abducted her on Friday night, April 1 and whipped her with belts until she signed a confession that she had been dating Negroes. The men were identified as Henry Gordon McDaniels, of Lipscomb; Charles E. Tyler, Lipscomb; Herman McWilliams of Garywood and James V. Vieth of Bessemer. They were arrested and released on \$250 bond each.

### Father of Presley To Marry

Vernon Presley, father of rock and roll singer Elvis Presley, will be married late this month to Mrs. Davada (Dec) Stanley, a pretty blond divorcee, formerly of Hampton, Va. Presley, 44, met his future wife in Germany. Best man for his father will be Elvis while Mrs. Stanley's brother, Richard Neely, of Huntsville, will give her away. Presley's first wife died August 14, 1958.

### Actors' Strike Is Ended

The actors' strike against seven major movie studios, which lasted 321 days, was settled Friday in a compromise which failed to win for the actors payment for post-1948 films sold to television. The actors did, however, receive a \$2,250,000 lump settlement for their pension fund. A major provision of the new contract, announced at the end of a three-hour contract-drawing session, calls for payment to actors in connection with films sold to television beginning this year.

### Brink's Employee "Takes" Money

Left alone for a few minutes in an armored truck belonging to Brink's, Inc., Chicago, truck driver William Johnson took a bag containing some \$30,000 and made a getaway. When Johnsons two teammates returned to the truck from a nearby currency exchange, it was locked. About an hour later, Johnson was found by police five miles from the truck in a tavern near his home. He was still clutching the bag of money and had just bought a round of drinks.

### Castro Refuses To Return Two Fliers

Fidel Castro's Cuban government Monday turned down an American plea to return two American fliers shot down in Cuba after a sneak flight from Florida. At the time the two fliers, William J. Schergales and Howard Rund, were arrested, Cuba announced that they were trying to spirit out of the country, a former agent of ex-president Fulgencio Batista, who was deposed by Castro's revolution. U. S. authorities later said they obtained a statement from Schergales that Castro's regime cooked up the flight to embarrass the United States.



FINE, THANK YOU — Gen. Douglas MacArthur, 80, is shown in New York City after his extensive hospitalization.

## Florence Woman Elected By League

Mrs. Atherton Hastings Named Vice President Alabama Women Voters

Mrs. Atherton Hastings, president of the Florence League of Women Voters since 1957 and member of the State Board of Directors for two years, was elected first vice president of the League of Women Voters of Alabama at the organization's biennial convention held April 7, in Birmingham.

Elected to the presidency was Mrs. R. F. Futrell, of Montgomery with other officers including Mrs. Hastings; Mrs. Charles Doster, Anniston, second vice president; Mrs. Allen Worsham, Anniston, treasurer; Mrs. Robert Francis, Birmingham, secretary.

Members of the board of directors will be Mrs. I. Berman, Montgomery; Mrs. H. W. Hoile, Birmingham; Mrs. Franklin Broyles, Huntsville; Mrs. John McConnell, Mobile; Mrs. Frederick Ogden, Tuscaloosa; and Mrs. Donald Pierce, Wetumpka. Receiving an appointment to the State Board was Mrs. Charles Bystrom, also of Florence, who will be Voter's Service Chairman of the State League.

Included among approximately 68 convention delegates which approved a program for study of state finance and taxation and apportionment of the state legislature were Mrs. T. O. Callahan, Mrs. William Nighman, Mrs. Aaron Lynch and Mrs. Charles Bystrom, all of Florence.

Featured speaker at the banquet, the highlight of the two-day meeting, was Ed E. Reid, former news paper publisher of Evergreen, Alabama, who has been executive director of the Alabama League of Municipalities since 1935.

Presiding at the banquet and session was Mrs. I. Berman, of Montgomery, State League president for 1960-62.

## Lexington Citizen Suffers Injuries

Mrs. Donna Peden, 68, Route 2, Lexington, suffered lacerations of the face Monday at 6:45 p.m. in an automobile accident which occurred about 3.2 miles north of Killen at the intersection of the Bridge Road and the Atlas Church Road.

Highway Patrolmen reported that Mrs. Peden was a passenger in the pickup truck traveling south on Bridge Road and being driven by James L. Boatright, 46, of Tishomingo, Miss. The pickup skidded some 33 feet into the rear of an automobile being driven by Charles E. Brigg, 18, of Route 1, Killen.

Miss Annette Koonce will arrive from "SMU" in Dallas, Tex., to spend the Easter holidays with her parents, Mr. and Mrs. James Koonce.

## Personality Sketches

By FRANCES HALL



M. I. GLAZIER

"The measure of a man is not only the success that he has made in his business but is determined as well by the contributions he has made toward aiding the less fortunate," is the consensus of an observing public.

"Melvin Glazier is a type of man whose success is measured by the helping hand he has continually extended to

the less fortunate and here we have a man who, by his unselfish devotion to the less fortunate, has demonstrated that he has a heart as big as all outdoors," is the observation of one who has been associated with him in many of his final works. "He has been an inspiration to all who have been associated with him," was the concluding remark.

Melvin Ivah Glazier was born in Woodbury, Meriwether County, Georgia, the son of Charles J. and Julia Massengale Glazier. The elder Mr. Glazier was a farmer.

Mr. Glazier attended elementary and high school in Woodbury, after which he attended the University of Georgia.

After the completion of his schooling, Mr. Glazier taught school and was principal at Chester High School in Chester, Ga. He filled this position for three years before entering the armed services in 1917, when World War I began.

In 1916, he was married to the former Dossa C. Turner, of Concord, Ga. Two children were born to the union, Lynwood, an aviator, who was lost in action during the second World War, and Miss Sylvia Glazier, a captain in the Air Corps now assigned to duty in the Pentagon in Washington.

After the war, from 1919 until 1935, Mr. Glazier was manager of a lumber yard in Tiffin, Ohio, after which he, with his family, moved to Florence where he immediately became connected with Stricklin Lumber Company.

He became a partner in the business in 1943 and in 1958 purchased the entire company, now known as Glazier Lumber Company.

Active in civic endeavors, Mr. Glazier has been a member of the Florence Kiwanis Club since 1943, being a past president and having held almost all other offices in the organization. He has also been a member of the Chamber of Commerce for many years.

Exceeding active in the work of the Salvation Army, Mr. Glazier was chairman of the Salvation Army Advisory Board for five consecutive terms, from 1955 to 1960, and now serves on the Executive committee, the Property committee and the Emergency Disaster committee.

## Petree, Levinson Attend Meetings

First Federal, Florence Represented At Sessions In Houston, Birmingham

John D. Petree, Vice-President, First Federal Savings and Loan Association of Florence has returned from a 3 day Management Conference held in Houston, Texas by the United States Savings and Loan League. Many outstanding speakers addressed the meeting, including W. D. Duvall of Atlanta, Ga. League president. Among the important subjects covered were the Outlook for General Business, The Present Real Estate Market, Today's Management Problems, The Money Situation and Interest Rates.

Round table discussions designed to further better management of local savings and loan associations were an interesting feature of the conference.

"The savings and loan business throughout the nation is very satisfactory," says Judge Petree, "and the consensus of opinion is that continued increases in savings would occur throughout 1960. Interest rates on home mortgages are not expected to go higher or dividends on savings during the year."

Max Levinson, First Federal advertising manager, attended a one day meeting of the Financial Public Relations Association in Birmingham April 6th. About 300 representatives from financial institutions from the Southeast attended. Many subjects relating to financial advertising and public relations were discussed.

Mrs. John Wilks, Jr., and daughter, Karen, have returned from Birmingham where they were with Mrs. Wilks' mother, Mrs. C. F. Lee of Decatur, a recent surgical patient in Highland Baptist Hospital.

## Farmers Urged Plant For Profit

Right Preparation Soil, Selection Of Seed Are Shown Important

By L. T. WAGNON, County Agent

Following are some ideas or reminders that may prove helpful to farmers in Lauderdale County. If questions arise regarding any of these or other agricultural activities, contact your county agent or one of the assistant agents.

### Cotton

It is reported that the germination of cottonseed from the 1959 crop is far below normal. This means that farmers will need to use more seed per acre to be assured of getting a good stand. It would be a good idea to plant one bushel to one and one-half bushels of cottonseed per acre when planting begins. Do not thin cotton to one stalk per hill, when chopping. Instead, leave three or four stalks per hill, no more than 12 inches apart in the drill. This will aid in keeping a good stand in the event some of the cotton dies or is destroyed during cultivation.

If the soil was tested, use the kind and amount of fertilizer recommended by the laboratory. It would be good to use the same kind and amount of fertilizer you have been using on a small area to compare results.

Be sure, when applying cotton fertilizer, that the fertilizer is placed at least two inches below and two inches to the side of the band where the seed will be placed. Poor stands of cotton have resulted from having seed and fertilizer too close together in the row.

Plant a recommended variety of cottonseed, corn and other seeds this year. Don't get your hybrid corn from the crib. Check with the county agent's office for recommended varieties of all seeds.

### Soybeans

If moist, fertile land is available, soybeans for oil may be a desirable cash crop for 1960. Soybeans require less work than other crops, but will not compete with grasses and weeds. Do not plant beans on poor land or land that is infested with Johnson grass or where crabgrass and weeds will take over. Soybeans must be clean cultivated for high yields.

A good fertilizer for soybeans is 400 pounds of 0-14-14 per acre. Some people prefer a 12-12 fertilizer. Two tons of limestone per

## Union Carbide Sets Nine Year Safety Record

More than nine years without a lost-time accident is the enviable safety record compiled by the Traffic and Raw Materials Department of the Union Carbide Metals Company plant located at Sheffield, according to C. E. Green, Superintendent.

The department, under the direction of Yardmaster J. C. "Cullen" Graham, normally employs some 30-35 people on a two-shift per day, five-day per week operation. The last lost-time accident occurred on February 10, 1951.

Transportation of raw materials to the Mix House and finished ferro alloys to the storage yard and river dock area are the two main functions of the department. The materials are moved by rail, truck and barge. Locomotive cranes are used to load and unload materials, while diesel locomotives are utilized for switching.

care should be applied unless the land has been limed within the past two or three years.

### Red Spiders

Red spiders that attack cotton about mid-summer can be controlled before they infest cotton fields. Red spiders enter cotton fields from such plants as pokeweed, weeds, and legumes along field borders. Destruction of these host plants will aid in controlling red spiders. It is rather early to remind farmers, but spiders have been controlled by applying a Trithion or four per cent Ethion applied, broadcast from the plowed ground to ten feet or fifteen feet into the weed area will do the job. One application of twenty-five pounds of either dust is usually all that is necessary. Contact the county agent's office for further information.

### Sericea

Farmers who plan to plant sericea in the conservation reserve program, or for other purposes, should be certain that the seeds have not been scarified for more than 60 days. If the seeds have been scarified more than 60 days, the germination can be much lower than that shown on the tag. It would be well to have them tested again, to be sure. If unscarified seeds have been bought, they should be scarified before planting.

The soil where sericea is to be grown should be tested before applying fertilizer. Three farmers saved a total of \$4984.20 on their fertilizer cost by having their soil tested on a total of 452.7 acres.



## PEACE COSTS MONEY

We all cherish our right to worship as we please, and where we please. But like all our basic individual rights, our freedom of religion needs peace. And peace costs money.

Money for industrial and military strength to help keep the peace.

Money for science and education to help make peace lasting. And money saved by individuals. Every U. S. Savings Bond you buy helps us keep the things worth keeping. Are you buying as many as you might?

Help Strengthen America's Peace Power

## Buy U.S. Savings Bonds

The Churches Of America Welcome You Easter Sunday

Funds Deposited  
By The 11th  
Earn Interest  
From The 1st

**THE FIRST NATIONAL BANK OF FLORENCE**  
 The N. Florence Branch  
 Drive-In Branch 501 East Tennessee  
 Your Friendly Hometown Bank  
 Member Federal Deposit Insurance Corporation

THE BANK IS THE SAVER'S BEST FRIEND

## Social and Personal

MRS. GARLAND S. TAYLOR, Social Editor  
Phone ATwater 2-3943

### Mr. Mrs. Roy Edward Keith Returned From Wedding Trip

Of local interest is the marriage in Fort Oglethorpe, Georgia, on Saturday, March twenty-sixth, of Miss Wanda Lee Marks, daughter of Mr. and Mrs. Homer Lee Marks of Florence, Route Four, and Roy Edward Keith, son of Mrs. Ruth Bullock of Fort Oglethorpe and G. B. Keith of South Carolina.

Pledges were said in First Baptist Church with the Reverend William Sellman, minister, reading the three o'clock vows. Nuptial selections were by Mrs. Evelyn Morgan, organist, and Carl Morgan, vocalist.

Given in marriage by her uncle, Dennis Morgan, the bride wore a gown of white lace over bridal satin designed with basque bodice and a very full skirt. Her shoulder-length veil of illusion was caught to a headpiece of pearls and with her Bible she carried a white orchid.

Miss Sue Austin of Fort Oglethorpe was the bride's honor attendant and bridesmaids included Miss Sandra Marks and Miss Gwen Marks, both of Florence, and Miss Pat Warren and Miss Jequita Keith, both of Fort Oglethorpe. Their frocks of brocade taffeta were in pastel shades and they wore matching demi-hats of taffeta and net and carried cascades of Spring blossoms.

Cindy Bullock served as flower girl and Terry Austin was ring bearer.

Best man for the bridegroom was Melvin McDaniels, and ushers included Bobby Warren, Steve Robinson, Edward Young and Nolan Richardson, all of Fort Oglethorpe.

Mrs. Marks, mother of the bride, was attired in light blue brocade taffeta worn with black patent accessories and Mrs. Bullock, mother of the bridegroom, was in a floral print detailed with organza overskirt. She wore yellow accessories and both mothers pinned white carnations at their shoulders.

Assisting at the reception in the church parlors immediately after the ceremony were Mrs. Lena Warren, Mrs. Beatrice Richardson and Mrs. Vivian Campbell, all of Fort Oglethorpe.

For travel, the bride wore a black accessories, and her corsage was the orchid from her bouquet. Mr. and Mrs. Keith are now at home at 46 Pegram Circle, Fort Oglethorpe, Ga.

### Miss Dorothy Anne Davidson To Wed In Early June

The engagement of Miss Dorothy Anne Davidson, daughter of Mr. and Mrs. Robert Boone Davidson of Florence, to Thomas Wayne Greenhaw, son of Mr. and Mrs. William Alex Greenhaw of Athens, has been announced by the parents of the bride-elect.

Miss Davidson was graduated from Coffee High School and is now a student at Florence State College where she is serving as secretary of the sophomore class.

Her fiancé was graduated from Atlanta High School and will be a May graduate of Florence State College where he is president of the Circle K Club, a member of the football team and the ROTC Battle Group Commander. Upon graduation he will be commissioned as a second lieutenant and will begin his tour of duty at Fort Bliss, Texas, on August nineteenth.

A June third wedding is being planned.

### Miss Rose Marie Vaughn Engagement Is Announced

Mr. and Mrs. Turner Lee Vaughn of Florence have announced the engagement and approaching marriage of their daughter, Rose Marie, to Tommy Carl Crittenden, son of Mr. Arthur R. Wells of Tunica, Mississippi, and the late William Carl Crittenden of Florence.

Miss Vaughn was graduated from Central High School and is now employed locally.

The prospective bridegroom was graduated from Coffee High School and served a two-years' tour of duty in the United States Army.

He is now a student at Florence State College where he is a member of the senior class.

Vows will be said on April twenty-ninth in Saint John's Methodist Church of Florence.

### Twilight Vows Mark Cox-Patterson Nuptials

In a six o'clock ceremony on Friday, April first, Miss Myra Ann Cox became the bride of James Denby Patterson in Lone Cedar church of Christ with Charles Kretzer, minister, officiating.

Parents of the couple are Mr. and Mrs. Elbridge Lloyd Cox of Florence, Route One, and Mr. and Mrs. Elmer Clyde Patterson of Florence, Route Six.

Basket arrangements of white gladioli, chrysanthemums and stock marked the candlelighted altar and flanked an arch which was entwined with greenery.

Mr. Cox gave his daughter in marriage. Her gown of white lace over satin was detailed with a molded bodice and long, full skirt. Distinguishing features were the long sleeves which came to petal points over the hands and the waistline which pointed slightly at the center front and back. Her veil of tulle was caught to a bandeau of lace and her bouquet was fashioned of white carnations.

Miss Patsy Cox wore aqua lace and chiffon and carried matching carnations to serve as her sister's only attendant, and John Patterson was best man for his brother.

Mrs. Cox chose for the occasion a jacket dress in pink and Mrs. Patterson was in a model of blue. White carnation corsages completed their attire.

Upon leaving for a wedding trip, the bride was wearing a navy ensemble with white accents and a cluster of white blossoms at her shoulder.

Now returned, Mr. and Mrs. Patterson are at home in North Florence.

### Miss Vickie Cochrane Bride Of Joseph Walton Douglass

A small guest company of family members and close family friends was present on Tuesday, April fifth, for the late afternoon nuptials in Our Lady of the Shoals Catholic Church, Tusculum, when Victoria Jane Cochrane, daughter of Mrs. Susan Fleming Cochrane of 674 Sannor Avenue, Florence, became the bride of Joseph Walton Douglass, son of Mr. and Mrs. John Mitchell Douglass of Lawrenceburg, Tennessee. Father Claude St. Germaine, O. S. B., pastor of the church, read the six o'clock vows.

Given in marriage by her uncle, Cephas Smith, the bride expressed sentiment in choosing for her wedding the floor-length gown of ivory satin which had been previously worn on a similar occasion by her aunt, now Mrs. Fred Collins Lane, 11, of Birmingham. Her three-quarter length veil cascaded from a Juliet cap of lace and her bouquet was a nosegay of white blossoms.

Miss Barbara Richardson, honor attendant, wore an aqua organza frock and Miss Marian Bourgeois, serving as bridesmaid, was dressed in coral. White accessories and shoulder clusters of white carnations were complementary details.

Paul Campbell was best man and ushers included Francis Barth, cousin of the bridegroom of Lawrenceburg, Doyle Pace and Henry King.

Mrs. Cochrane, mother of the bride, wore a cream lace sheath with matching accessories and Mrs. Douglass chose for her son's wedding an ensemble of green.

A reception for the bridal party and wedding guests in the Florence home of the bride's great-aunt, Mrs. William J. Callaway, followed the ceremony. Assisting were Mrs. Charles Boyd Thomas, Mrs. Lester Elledge and Mrs. Cephas Smith, aunts of the bride.

Mr. and Mrs. Douglass have returned from a brief honeymoon and will be at home for the present at 424 North Wood Avenue.

The bride attended Vanderbilt University in Nashville and Florence State College, majoring in art and English. She is vice-president of the English organization at the latter institution.

Mr. Douglass attended the University of Tennessee in Knoxville where he was affiliated with Phi Gamma Delta social fraternity, and was graduated from Florence State College with a fine arts major. He is presently engaged in post-graduate work in art education at Florence State and is a member of Alpha Psi Omega, honorary dramatics fraternity, and the Art League.

A veteran of three years with the United States Army, Mr. Douglass spent two of those years in Europe. He expects to return to active duty in early June, with the rank of second Lieutenant.

Out-of-town guests here for the wedding were Mr. and Mrs. J. M. Douglass, Mr. and Mrs. Frank Barth, Joe F. Kraus and Mrs. Joe F. Kraus, Jr., Mr. and Mrs. William Sevier, Harlon Morrow and Miss Helen Morrow, all of Lawrenceburg, and B. F. Gregory of Chattanooga.

### Miss Grace Virginia Gray, Val G. Killin, Jr., Say Vows

Solemnized in historic Westminster Presbyterian Church of Alexandria, Virginia, on Saturday, April second, was the marriage of Grace Virginia Gray of Washington, D. C., and Florence, daughter of Mr. and Mrs. Duncan Simpson Gray of Florence, and Val G. Killin, Jr., son of Mr. and Mrs. Val G. Killin of Kiowa, Colorado.

Dr. Cliff R. Johnson, minister of the church, read the five o'clock nuptial vows following nuptial selections by Dana Brown, organist.

Against a background of greenery, the candlelighted altar was detailed with arrangements of white gladioli, stock and chrysanthemums.

Mr. Gray escorted his daughter and gave her in marriage. For the occasion of her wedding, the bride chose a full-skirted, waltz-length gown of white lace over tulle distinguished by a scalloped neckline re-embroidered with sequins and pearls and long sleeves that tapered to points over the hands. A tiara of lace and pearls held her shoulder-length veil to the side and her cascade bouquet was fashioned of white feathered carnations. Her only ornament was an heirloom brooch set in diamonds and pearls which the bride's mother previously wore on her own wedding day.

Miss Anne Gray was her sister's only attendant. She wore a frock of pink silk organza with wide, crushed cummerbund that extended into a big back-bow and her headpiece was a wisp of pink veiling caught to a matching bandeau. She carried a nosegay of pink feathered carnations.

David Hudson of Washington served Mr. Killin as best man and ushers included Roy Snider, brother-in-law of the bride, of Charlotte, N. C., and Vernon Meisner, also of Washington.

Mrs. Gray, mother of the bride, wore a pastel blue sheath with beaded neckline, matching accessories and a small, blue-flowered hat. A corsage of white carnations completed her attire.

Immediately after the ceremony, the bride's parents were reception hosts, entertaining in the church parlors. Assisting were Mrs. Roy Snider of Charlotte, N. C., Mrs. James Mackey and Mrs. John Bowser, Jr., of Florence, sisters of the bride; Mrs. David Hudson, Misses Ethel and Esther Johnson and Miss Gwen Murphy, all of Washington.

Upon leaving for a honeymoon on the coasts of Virginia and North and South Carolina, the bride wore a blue silk suit with beige accessories and a corsage of white rosebuds.

Mr. and Mrs. Killin returned last week end and are now at home at 4801 South 30th Street, Arlington, Va.

### Miss Gail Wynnell Auten To Say Nuptials In June

Announcement has been made by Mrs. LaMae Auten of Florence of the forthcoming marriage of her daughter, Gail Wynnell, to George Ernest Stovall, III, son of Mr. and Mrs. George Ernest Stovall, Jr., of Killen.

Miss Auten, daughter of Louie E. Auten of Killen and a graduate of Deshler High School in Tusculum, is now locally employed.

## EASTER, 1960



The bridegroom-elect was graduated from Coffee High School and attended Florence State College. He is presently employed in Huntsville.

First Baptist Church of Tusculum will be the scene of the June fifth wedding.

### New WSGA Officers At FSC Are Feted

The Spring frocks and bonnets of hostesses and guests against a flowering background of daffodils, forsythia and tulips in the double parlors of Rogers Hall added charm to the traditional April tea given by the Florence State College Women Students' Government Association one afternoon last week. This was the occasion for presenting the new officers of the Association to faculty members and co-eds, and mother of all women students were among the special guests.

During the party hours the tea table, veiled in pale green tulle complemented by yellow carnations and yellow candles, was presided over by Mrs. Melville Burns, Mrs. Mabel Dent, Mrs. W. H. Glenn, Mrs. Nell Ingram, Mrs. W. F. McFarland and Mrs. W. R. Tippton, social directors. Also assisting were Miss Pauline Gravlee, Dean of Women, and Miss Pearl Sparks, hostess at Rogers Hall.

In the sunparlor an exhibit of paintings and craftwork had been arranged by members of the Art Department, while on the ground floor the Museum, newly decorated, was open for the pleasure of the guests. Mrs. Roy McCrory, curator, was assisted by her granddaughter and grandson, Nancy and John Smith McCrory, and by Leslie Gibbons.

Chairman of the event was Ann Hollingsworth. Officers recently elected to serve during the coming year are: Barbara Thigpen, Florence, president; Brenda Kirby, Section, vice-president; Frances Sims, Fayette, treasurer; Romona Burrows, Corinth, Miss., social chairman, and Mary Butler, Florence, town representative.

Mrs. Gilbert McGee, president of the club, welcomed members of Florence Study Club and three additional guests, Mrs. Hubert Young of Tusculum, Mrs. Roy Wagstaff of Sheffield and Mrs. James Gilbert of Florence, at her home in Cherokee on Tuesday afternoon, April fifth.

Mrs. Braxton Ashe, program chairman for the afternoon, reviewed for her listeners Nell S. Graydon's Civil War story, "Another Jebel."

Mrs. Lester Norvell, Sr., and Mrs. W. W. Hairston, president and secretary of the club respectively, presided at the prettily appointed teatable during the late afternoon refreshment hour.

### Juvenile Music Club Hears Festival Numbers

Club members who participated in the annual Music Festival in Wesleyan Hall during late March were featured at the April meeting of Juvenile Music Club held recently at Trinity Parish House.

Included were John Bowman, Jane Bowman, Judy Ann Hibbett, Gay Barber, Ann Barber, Jackie Trousdale, Jeanie Hamilton, Candy Platt, Anna Edmondson and Tom Dasher.

Also on the program were Cathy Nix, Robert Mager, Sue Getsinger, Evalou Richardson, Carol Rice, Linda Clark, Charles Doss, Carolyn Cox and Maureen Bitters.

Martha Lowe was winner of the attendance prize and hosts were Celestine Mitchell, Ann and Gay Barber, Carol Rice, Debbie McGill, Anna Edmondson and Frederick Horsfield.

### Maple Heights Gardeners Hear Program On Arranging

The April meeting of the Maple Heights Garden Club took place in the Florence Recreation Center with Mrs. J. F. Gilbert, program leader, being assisted by Mrs. J. M. Rose and Mrs. Graham Edwards.

Several arrangements made prior to the meeting were displayed as Mrs. Edwards pinpointed sections of Hazel P. Dunlop's "Let's

Arrange Flowers" and Mary Badham Kittel's "Easy Ways to Good Flower Arrangement." Using a tiered container, she demonstrated the use of flowers in three stages of blossom; the long-stemmed buds at the center; partially opened blossoms lower and to the left and the full-blown flowers in the lowest position and to the right.

Also discussed were the five-point arrangement and the mass arrangement.

Nineteen numbers were present.

### Hypatyan Club Meets With Mrs. Barnwell

Mrs. Robert Martin, Hypatyan Club president now returned from

a Winter's stay in Florida, presided at the club's Thursday, April seventh, meeting when Mrs. Foster Barnwell entertained members at her home on Riverview Drive.

Mrs. Louis Martin, program leader for the afternoon, gave an interesting and informative talk on Africa. Displaying a large map which divided the continent into its various countries, Mrs. Martin shared with her listeners information garnered from numerous magazine articles and read excerpts from Joy Thacker's "Valley of the Vines" wherein the author, a South African of English parentage, tells the story of the Union of South Africa.

A silver bowl of camellias fashioned the centerpiece for the teatable where Mrs. Madding King presided following the program. Fifteen members were present.

Mrs. Philip Arelllo will leave Tuesday for Atlanta where she will attend executive meetings of the Presbyterian Women of the church work in the Synodicals.

## Pre-Easter Specials!

classic  
spectator

A nationally advertised brand  
Dressy high heel style.

6.99

AA and B — to size 10.  
• White with Patent  
• White with Benedictine

Children's  
strap slippers

Broken sizes in Better Brands

3.27

Patents and Whites

Infants' sizes 5  
to Misses' sizes 3

Rogers



Shoes, Main floor

## Bank of Lexington Advances 484 Places

## American Banker Reports Progress of Local Institution

(See Story on Page One)

### CONDENSED STATEMENT OF THE CONDITION OF

## Bank of Lexington

## At The Close of Business December 31, 1959

**OFFICERS**  
CHAS. P. McMEANS  
President  
D. T. WILCOXSON  
Chairman of the Board  
LUTHER KING  
Vice President  
B. A. PORTER  
Cashier  
RALEIGH NIX, JR.  
Asst. Cashier  
VIRGINIA McMEANS  
Asst. Cashier  
Marjorie Belew, Secretary to the President  
Yvonne Porter, Head Bookkeeper  
Margaret Smith, Bookkeeper  
Julia Robertson, Bookkeeper

**DIRECTORS**  
CHAS. P. McMEANS  
D. T. WILCOXSON  
B. A. PORTER  
EUGENE McMEANS  
NEIL WILCOXSON  
LUTHER KING  
WILLIAM E. KING  
WALLACE H. THOMPSON  
SAM HAMMOND

DEPOSITS INSURED  
BY  
FEDERAL DEPOSIT  
INSURANCE CORP.  
OF  
WASHINGTON, D. C.

\$10,000.00  
MAXIMUM INSURANCE  
EACH DEPOSITOR

### RESOURCES:

Cash and Due from Banks	\$ 291,663.48
U.S. Government Bonds	1,369,468.75
State of Alabama Bonds	26,651.77
Banking House, Furniture & Fixtures	9,699.31
Loans & Discounts	1,184,939.69
Other Assets	1,645.93
Other Real Estate	9,816.27
<b>TOTAL</b>	<b>\$2,893,885.20</b>

### LIABILITIES:

Capital	\$ 60,000.00
Surplus	60,000.00
Undivided Profits	47,278.92
Deposits	2,726,606.28
<b>TOTAL</b>	<b>\$2,893,885.20</b>

### BANK BY MAIL

We offer equally as efficient service to our customers who "Bank by Mail" as we do those who choose to call on us in person at our banking house.

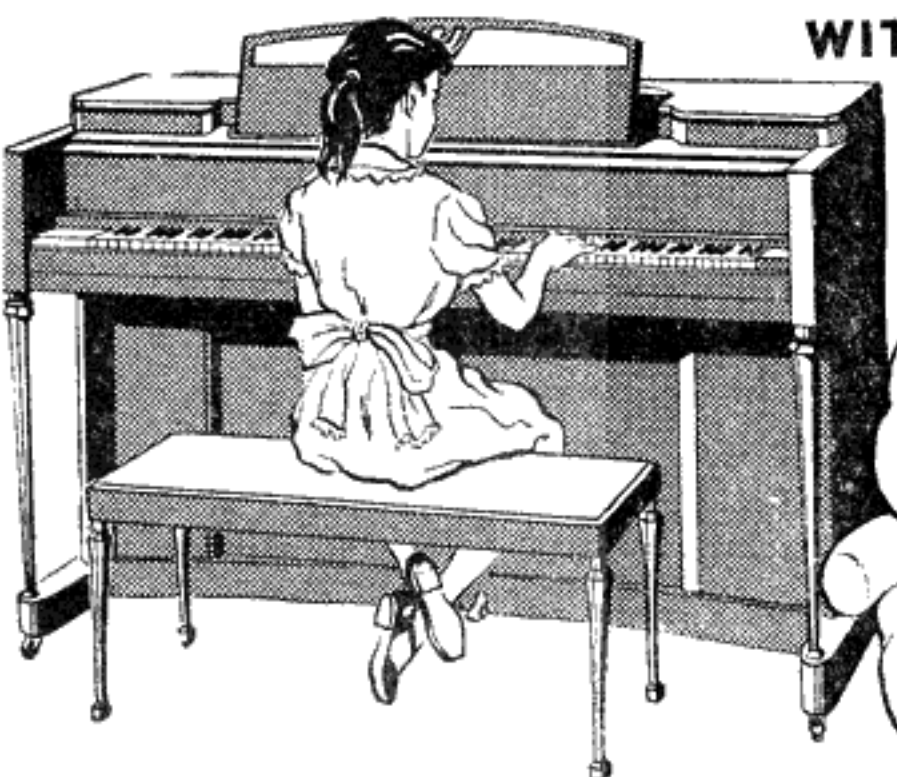
## Easter-time is Music time

WITH A BEAUTIFUL NEW

## Story & Clark

PIANO

Easter is the symbol of all that is good and enduring in life. Easter is the perfect time to give your children a beautiful new Story & Clark piano, to start them on the life-long enjoyment of music. See our wonderful display of Story & Clark pianos, today! They're lovely beyond words, and surprisingly inexpensive.



MAGNIFICENT TONE!  
SUPERB STYLING!

PENNIES A DAY  
EASY PAYMENTS!

## E. E. Forbes & Sons Piano Co.

109 S. COURT ST.

DIAL AT 2-3932

FLORENCE, ALA.

**By Myra Porter**

Visiting with the following people; Mrs. W. T. Lemay, Mark Williams and Doris Davis, at the Decatur General Hospital recently were Mrs. W. T. Lemay and Stella, Mrs. Lee Butler, Mr. and Mrs. Theo Williams and Wilma, Mrs. Harlon and Mrs. Sally Williams.



**STATE FARM**  
*State Farm Mutual*  
 Automobile Insurance Company  
 Home Office: Bloomington, Illinois  
 P-6052

The Lexington PTA would like to express their appreciation to all those who took part in the recent Variety Show. Without these people the show would not have been a success.

Sportswear Dept.

## Florence

ARRIVING FROM New York City for a Springtime visit to Bob Dabney . . . Doris Martin was a

BIRTHDAYS OF RECENT DATE  
 clude that of Betty Severin . . .  
 whose late March (the 24th) anni-  
 versary was an unforgettable event  
 with Betty receiving a lovely  
 present from hubby Jack . . .  
 (DOCTOR) Waters Gray and Ber-  
 ender celebrate a mutual  
 birthday . . . which misses April  
 Fool's Day by only a hair . . . AND  
 T the home of his daughter (Net-  
 tie) Mae Duncan . . . 517 North  
 (ood) J. Fred Johnson is marking  
 his ninety-fifth milestone today  
 with a large circle of family  
 members and well-wishing friends  
 around about . . . Madam tips her  
 springing chapeau . . .  
 AND NOW . . . CHEERIO and  
 dooby . . . until more news comes  
 through The Spillway . . .

Michael Moody, a student at the University of Pennsylvania in Philadelphia, is an Easter guest with his grandmother, Mrs. Pearl Williams Moody, in Tennessee Court-  
house Square. Rogers returned yesterday from a few days' stay with his sister, Jerry Cason in Nashville. She is accompanied there by Mrs. Charles S. Long who also visited frequently with longtime friends. After attending a family wedding in Alexandria, Va., Duncan and Mr. Rogers spent a few days with their mother, Mrs. William Duncan, at her home, 417 North Wood, before flying to Denver, Colo.

10-10-1964



Weldon and his wife, the former Delores Dollar, will move to Tuscaloosa in September where he will accept a graduate scholarship in the School of Business.

Mary Ellen is a senior from Effield; Weldon is a senior from Addison.

By Mrs. Andrew Thrasher

The Sr. Play will be presented Central Tuesday night, April at 7:45. Cast is: Hydrangea Toone Jimpson, Sue Abramson; Epimic Apocalypse Peters, Johnny ramson; Ruth Alden Angell, the Howard; Dr. Wylie Angell, my Boyd; Patricia Angell, rrv-Lou Roberson, Venetia Or-



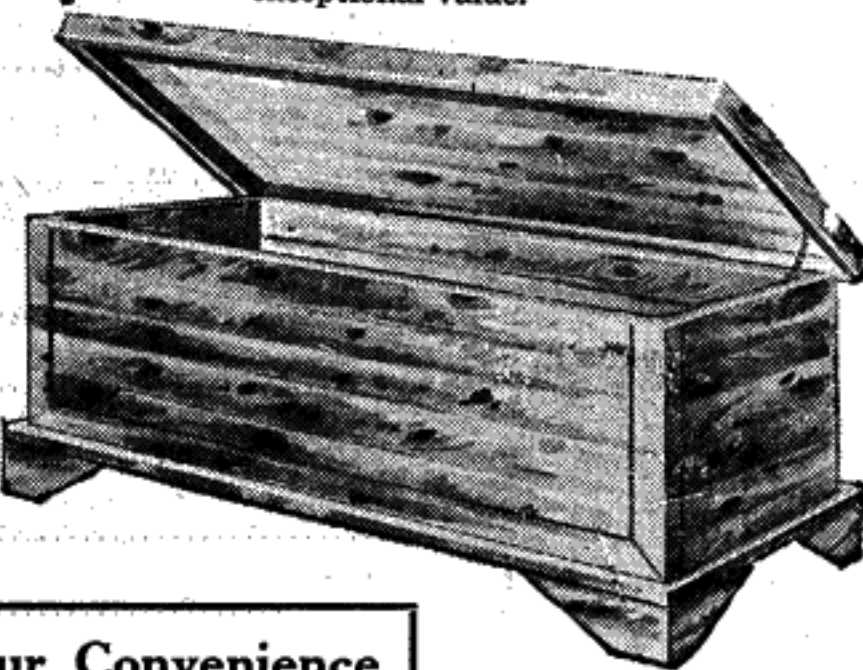
you so much time, so many steps. Keeps you in touch with friends and family. And no matter how many local calls you make, there's never an extra penny's charge. No cost for repairs, either. How's that for a real bargain!



Your servant every hour of the day, and every day of the year.

We have recently opened up a "Branch Office" in North Florence. Actually, it isn't a Branch Office, but an office to allow you who live and do your shopping in North Florence to pay your telephone bills without having to come downtown. The place is Western Auto Associate Store in the Seven Points Shopping Center. Mr. or Mrs. Jack McKelvey will accept your payments without any service charge whatsoever. They're swell folks—go by and meet them and when it comes time to pay your telephone bill, the McKelveys will be glad to help you. Plenty of free parking, too!

**THE WARDROBE**... Made of solid richly grained TENNESSEE RED CEDAR, this is an extra roomy, moth free storage for your entire wardrobe. Value packed with extra features... solid cedar doors, solid cedar sides, solid cedar top and bottom, and metal pulls. A most exceptional value.



**THE CEDAR CHEST**  
Loads of mothproof storage space for blankets, comforters, woolens, etc. Aromatic Red Cedar in natural finish. 37 inches wide and 17 inches high and deep.

The LONG Man with the SHORT PRICES  
**BROADHEAD'S**  
FURNITURE COMPANY

## Florence



After you complete your plans for Easter, you will immediately begin making plans for your graduation—and the future. Have you included in your "thinking" the wonderful opportunity that an expertly trained Hair Stylist has to reach that above-average earning group?

No profession offers more lucrative returns and no profession brings such immediate reward. Learn in the South's most famous Beauty Culture School under the direction of RAY REED and you're launched on the finest of all careers. Let us tell you more about it.

**OUR BEST  
Permanent Wave  
WEDNESDAYS ONLY  
At  
Big Reduction**

<b>CHECK THESE LOW PRICES</b>	<b>Shampoo Set</b>	<b>Cut Shampoo Set</b>	<b>Permanent Wave</b>
<b>Junior Students</b>	<b>— \$ .50</b>	<b>\$1.00</b>	<b>from \$2.95</b>
<b>Senior Students</b>	<b>— .75</b>	<b>1.50</b>	<b>from 3.95</b>
<b>Advance Students</b>	<b>— 1.00</b>	<b>2.00</b>	<b>from 4.95</b>

# RAY'S UNIVERSITY of BEAUTY

**FLORENCE**

## Legal Notice

### Notice of Mortgage Foreclosure

Default having been made in the terms of payment of a mortgage executed by William J. Groome to Henry O. Smith on October 14, 1952 for \$150.00 and said default continuing, under the powers contained in said mortgage, I will, as mortgagee, sell to the highest bidder for cash, in front of the Court House Door in Florence, Lauderdale County, Alabama, within legal hours of sale, the following described real estate, located in Lauderdale County, Alabama, and more fully described as being "The Northwest 1/4 of the

Southwest 1/4 of Section 5, Township 1, Range 15, West, containing 40 acres, more or less," together with the appurtenances thereunto belonging, the proceeds of said sale to be applied as directed in said mortgage.

This April 6, 1960.  
Henry O. Smith,  
Mortgagee  
Raymond Murphy, Attorney  
April 7, 14, 21

### ADMINISTRATOR NOTICE

Estate of M. R. Coburn, deceased.  
PROBATE COURT  
Letters testamentary of said deceased having been granted to the undersigned on the 31st day of March, 1960, by the Hon. Estes R. Flynt, Judge of the Probate Court

of Lauderdale County, notice is hereby given that all persons having claims against said estate are hereby required to present the same within time allowed by law or the same will be barred.

Charles E. Coburn  
Executor  
April 7, 14, 21

### MORTGAGE FORECLOSURE NOTICE

Under and by virtue of a certain mortgage executed to the undersigned by James M. Emmons and wife, Patricia Emmons, under date of October 17, 1958, to secure a sum therein named, which mortgage is recorded in the Office of the Judge of Probate of Lauderdale County, Alabama, in Book 651, at Pages 513-15, default having been made in the payment thereof, and said default continuing, the undersigned will, under the power of sale therein contained, sell to the highest bidder for cash at the Court House door in Lauderdale County, Alabama, on Friday, April 22, 1960, during the legal hours of sale, the following described property located in the City of Florence, Lauderdale County, Alabama, to-wit:

Lot No. 13 in Block No. 3 in Rose Park, a subdivision in Lauderdale County, Alabama, said subdivision being known and designated according to the plat thereof recorded in the Office of the Judge of Probate of said County in Plat Book 3, Page 7; said Lot No. 13 fronting 83.29 feet on the Northwesterly line of Rose Drive and extending back Northwesterly 200 feet; lying and being in the Southwest Quarter of Section 23, Township 2 South, Range 11 West.

Together with the appurtenances thereunto belonging.  
The proceeds of said sale to be applied as directed in said mortgage.

FIRST FEDERAL SAVINGS AND LOAN ASSOCIATION OF FLORENCE, Mortgagee  
March 31; April 7, 14

### MORTGAGE FORECLOSURE NOTICE

WHEREAS, William Lieutenent Cole and Willa Dean Cole, of Florence, Lauderdale County, Alabama, executed to Garber, Cook and Hulse, Inc., a corporation, a mortgage dated September 10, 1958, on the real property hereinafter described to secure a loan from said mortgagee; said mortgage appearing in record in the Office of the Judge of Probate of Lauderdale County, Alabama, in Vol. 682, Pages 145-148; and WHEREAS, said mortgage was transferred and assigned to Federal National Mortgage Association, a corporation organized under an Act of Congress and existing pursuant to the Federal National Mortgage Association Charter Act, having its principal office in the City of Washington, District of Columbia, by the said Garber, Cook and Hulse, Inc., a corporation, on the 10th day of September, 1959;

Default having been made in the payment of the indebtedness secured by said mortgage and such default continuing, the undersigned Federal National Mortgage Association, a corporation organized under an Act of Congress and existing pursuant to the Federal National Mortgage Association Charter Act, having its principal office in the City of Washington, District of Columbia, as transferee of said mortgage, under and by virtue of the powers and authority granted in said mortgage, will sell to the highest bidder for cash, within legal hours of sale, in front of the Court House door in Florence, Alabama, on the 14th day of May, 1960, the real property described in said mortgage and in the note secured by said mortgage as follows, to-wit:

Lot 4 in Block 4 of HANDY HEIGHTS (Project U R Ala. 5-1), a subdivision, according to the plat thereof recorded in the Office of the Judge of Probate of Lauderdale County, Alabama, in Plat Book 3, Page 40.  
Subject to easements for utilities as shown on record may of said subdivision and to protective covenants adopted by Florence Housing Authority, et al, recorded in Book 620, Pages 289-33, as amended by instrument recorded in Book 628, Pages 73-4.

This sale is being made to satisfy the indebtedness secured by said mortgage and said sale will be made after this notice of sale has been advertised once a week for three (3) consecutive weeks in The Florence Herald, a newspaper published in Florence, Alabama, the county wherein said mortgage resides, and the proceeds of said sale will be disbursed in accordance with the provisions of said mortgage.

FEDERAL NATIONAL MORTGAGE ASSOCIATION  
a corporation organized under an Act of Congress and existing pursuant to the Federal National Mortgage Association Charter Act, having its principal office in the City of Washington, District of Columbia.  
ATLANTA, GEORGIA, Transferee of said mortgage.  
T. EUGENE BURTS,  
Attorney for Transferee  
Florence, Alabama  
April 14, 21, 28

### MAYS ASSOCIATED WITH HUNTSVILLE FIRM

Electronics, Inc., of Huntsville, firm manufacturers of components for TV distribution systems, Tuesday announced the appointment of Bill Mays, Sheffield, as the head of marketing and community relations.

A newsman for a local radio station, Mays was former manager of the Muscle Shoals TV Cable Corporation.

## TELEVISION

FOR WEEK OF APRIL 15 THROUGH APRIL 21

### DAILY - MONDAY THROUGH FRIDAY

#### CHANNEL 6-WBRC-TV CBS

#### CHANNEL 8-WSIX-TV ABC

#### CHANNEL 13-WAPI-TV NBC

#### CHANNEL 15-WOWL-TV ABC - CBS - NBC

#### WBRC-Channel 6

5:30 Religious Series  
6:00 Country Boy Eddie  
7:00 Morning Show  
7:30 Alabama Farm News  
8:00 Morning News  
8:15 Captain Kangaroo  
9:00 For Better or for Worse  
9:30 On The Go  
10:00 1 Love Lucy  
10:30 Decent Bride  
11:00 Love of Life  
11:30 Search for Tomorrow  
12:00 Guiding Light  
12:30 Susie  
1:00 As The World Turns  
1:30 Houseparty  
2:00 The Millionaire  
2:30 Perfect 10  
3:00 Brighter Day  
3:15 Secret Storm  
3:30 Edge of Night  
4:00 The Californians  
4:30 Bugs Bunny  
4:55 News  
5:00 Highway Patrol  
5:30 Alabama Newsreel  
5:45 Doug Edwards News

#### WSIX-Channel 8

8:45 Sign on  
9:00 Cartoons  
9:30 Room Room  
10:30 Trouble With Father  
11:00 Susie  
11:30 Our Miss Brooks

#### NIGHT

10:30 6 Be Our Guest  
11:00 13 Live Wrestling  
11:30 6 Home Theater  
12:30 13 Midnite Jubilee

FRIDAY, APRIL 15

6:00 McGraw  
6:15 13 Huntley-Brinkley  
6:30 6 Rawhide  
6:45 Walt Disney  
7:00 13 Walt Disney  
7:30 13 Walt Disney  
7:45 13 Walt Disney  
8:00 13 Walt Disney  
8:15 13 Walt Disney  
8:30 13 Walt Disney  
8:45 13 Walt Disney  
9:00 13 Walt Disney  
9:15 13 Walt Disney  
9:30 13 Walt Disney  
9:45 13 Walt Disney  
10:00 13 Walt Disney  
10:15 13 Walt Disney  
10:30 13 Walt Disney  
10:45 13 Walt Disney  
11:00 13 Walt Disney  
11:15 13 Walt Disney  
11:30 13 Walt Disney  
11:45 13 Walt Disney  
12:00 13 Walt Disney  
12:15 13 Walt Disney  
12:30 13 Walt Disney  
12:45 13 Walt Disney  
1:00 13 Walt Disney  
1:15 13 Walt Disney  
1:30 13 Walt Disney  
1:45 13 Walt Disney  
2:00 13 Walt Disney  
2:15 13 Walt Disney  
2:30 13 Walt Disney  
2:45 13 Walt Disney  
3:00 13 Walt Disney  
3:15 13 Walt Disney  
3:30 13 Walt Disney  
3:45 13 Walt Disney  
4:00 13 Walt Disney  
4:15 13 Walt Disney  
4:30 13 Walt Disney  
4:45 13 Walt Disney  
5:00 13 Walt Disney  
5:15 13 Walt Disney  
5:30 13 Walt Disney  
5:45 13 Walt Disney  
6:00 13 Walt Disney  
6:15 13 Walt Disney  
6:30 13 Walt Disney  
6:45 13 Walt Disney  
7:00 13 Walt Disney  
7:15 13 Walt Disney  
7:30 13 Walt Disney  
7:45 13 Walt Disney  
8:00 13 Walt Disney  
8:15 13 Walt Disney  
8:30 13 Walt Disney  
8:45 13 Walt Disney  
9:00 13 Walt Disney  
9:15 13 Walt Disney  
9:30 13 Walt Disney  
9:45 13 Walt Disney  
10:00 13 Walt Disney  
10:15 13 Walt Disney  
10:30 13 Walt Disney  
10:45 13 Walt Disney  
11:00 13 Walt Disney  
11:15 13 Walt Disney  
11:30 13 Walt Disney  
11:45 13 Walt Disney  
12:00 13 Walt Disney  
12:15 13 Walt Disney  
12:30 13 Walt Disney  
12:45 13 Walt Disney  
1:00 13 Walt Disney  
1:15 13 Walt Disney  
1:30 13 Walt Disney  
1:45 13 Walt Disney  
2:00 13 Walt Disney  
2:15 13 Walt Disney  
2:30 13 Walt Disney  
2:45 13 Walt Disney  
3:00 13 Walt Disney  
3:15 13 Walt Disney  
3:30 13 Walt Disney  
3:45 13 Walt Disney  
4:00 13 Walt Disney  
4:15 13 Walt Disney  
4:30 13 Walt Disney  
4:45 13 Walt Disney  
5:00 13 Walt Disney  
5:15 13 Walt Disney  
5:30 13 Walt Disney  
5:45 13 Walt Disney  
6:00 13 Walt Disney  
6:15 13 Walt Disney  
6:30 13 Walt Disney  
6:45 13 Walt Disney  
7:00 13 Walt Disney  
7:15 13 Walt Disney  
7:30 13 Walt Disney  
7:45 13 Walt Disney  
8:00 13 Walt Disney  
8:15 13 Walt Disney  
8:30 13 Walt Disney  
8:45 13 Walt Disney  
9:00 13 Walt Disney  
9:15 13 Walt Disney  
9:30 13 Walt Disney  
9:45 13 Walt Disney  
10:00 13 Walt Disney  
10:15 13 Walt Disney  
10:30 13 Walt Disney  
10:45 13 Walt Disney  
11:00 13 Walt Disney  
11:15 13 Walt Disney  
11:30 13 Walt Disney  
11:45 13 Walt Disney  
12:00 13 Walt Disney  
12:15 13 Walt Disney  
12:30 13 Walt Disney  
12:45 13 Walt Disney  
1:00 13 Walt Disney  
1:15 13 Walt Disney  
1:30 13 Walt Disney  
1:45 13 Walt Disney  
2:00 13 Walt Disney  
2:15 13 Walt Disney  
2:30 13 Walt Disney  
2:45 13 Walt Disney  
3:00 13 Walt Disney  
3:15 13 Walt Disney  
3:30 13 Walt Disney  
3:45 13 Walt Disney  
4:00 13 Walt Disney  
4:15 13 Walt Disney  
4:30 13 Walt Disney  
4:45 13 Walt Disney  
5:00 13 Walt Disney  
5:15 13 Walt Disney  
5:30 13 Walt Disney  
5:45 13 Walt Disney  
6:00 13 Walt Disney  
6:15 13 Walt Disney  
6:30 13 Walt Disney  
6:45 13 Walt Disney  
7:00 13 Walt Disney  
7:15 13 Walt Disney  
7:30 13 Walt Disney  
7:45 13 Walt Disney  
8:00 13 Walt Disney  
8:15 13 Walt Disney  
8:30 13 Walt Disney  
8:45 13 Walt Disney  
9:00 13 Walt Disney  
9:15 13 Walt Disney  
9:30 13 Walt Disney  
9:45 13 Walt Disney  
10:00 13 Walt Disney  
10:15 13 Walt Disney  
10:30 13 Walt Disney  
10:45 13 Walt Disney  
11:00 13 Walt Disney  
11:15 13 Walt Disney  
11:30 13 Walt Disney  
11:45 13 Walt Disney  
12:00 13 Walt Disney  
12:15 13 Walt Disney  
12:30 13 Walt Disney  
12:45 13 Walt Disney  
1:00 13 Walt Disney  
1:15 13 Walt Disney  
1:30 13 Walt Disney  
1:45 13 Walt Disney  
2:00 13 Walt Disney  
2:15 13 Walt Disney  
2:30 13 Walt Disney  
2:45 13 Walt Disney  
3:00 13 Walt Disney  
3:15 13 Walt Disney  
3:30 13 Walt Disney  
3:45 13 Walt Disney  
4:00 13 Walt Disney  
4:15 13 Walt Disney  
4:30 13 Walt Disney  
4:45 13 Walt Disney  
5:00 13 Walt Disney  
5:15 13 Walt Disney  
5:30 13 Walt Disney  
5:45 13 Walt Disney  
6:00 13 Walt Disney  
6:15 13 Walt Disney  
6:30 13 Walt Disney  
6:45 13 Walt Disney  
7:00 13 Walt Disney  
7:15 13 Walt Disney  
7:30 13 Walt Disney  
7:45 13 Walt Disney  
8:00 13 Walt Disney  
8:15 13 Walt Disney  
8:30 13 Walt Disney  
8:45 13 Walt Disney  
9:00 13 Walt Disney  
9:15 13 Walt Disney  
9:30 13 Walt Disney  
9:45 13 Walt Disney  
10:00 13 Walt Disney  
10:15 13 Walt Disney  
10:30 13 Walt Disney  
10:45 13 Walt Disney  
11:00 13 Walt Disney  
11:15 13 Walt Disney  
11:30 13 Walt Disney  
11:45 13 Walt Disney  
12:00 13 Walt Disney  
12:15 13 Walt Disney  
12:30 13 Walt Disney  
12:45 13 Walt Disney  
1:00 13 Walt Disney  
1:15 13 Walt Disney  
1:30 13 Walt Disney  
1:45 13 Walt Disney  
2:00 13 Walt Disney  
2:15 13 Walt Disney  
2:30 13 Walt Disney  
2:45 13 Walt Disney  
3:00 13 Walt Disney  
3:15 13 Walt Disney  
3:30 13 Walt Disney  
3:45 13 Walt Disney  
4:00 13 Walt Disney  
4:15 13 Walt Disney  
4:30 13 Walt Disney  
4:45 13 Walt Disney  
5:00 13 Walt Disney  
5:15 13 Walt Disney  
5:30 13 Walt Disney  
5:45 13 Walt Disney  
6:00 13 Walt Disney  
6:15 13 Walt Disney  
6:30 13 Walt Disney  
6:45 13 Walt Disney  
7:00 13 Walt Disney  
7:15 13 Walt Disney  
7:30 13 Walt Disney  
7:45 13 Walt Disney  
8:00 13 Walt Disney  
8:15 13 Walt Disney  
8:30 13 Walt Disney  
8:45 13 Walt Disney  
9:00 13 Walt Disney  
9:15 13 Walt Disney  
9:30 13 Walt Disney  
9:45 13 Walt Disney  
10:00 13 Walt Disney  
10:15 13 Walt Disney  
10:30 13 Walt Disney  
10:45 13 Walt Disney  
11:00 13 Walt Disney  
11:15 13 Walt Disney  
11:30 13 Walt Disney  
11:45 13 Walt Disney  
12:00 13 Walt Disney  
12:15 13 Walt Disney  
12:30 13 Walt Disney  
12:45 13 Walt Disney  
1:00 13 Walt Disney  
1:15 13 Walt Disney  
1:30 13 Walt Disney  
1:45 13 Walt Disney  
2:00 13 Walt Disney  
2:15 13 Walt Disney  
2:30 13 Walt Disney  
2:45 13 Walt Disney  
3:00 13 Walt Disney  
3:15 13 Walt Disney  
3:30 13 Walt Disney  
3:45 13 Walt Disney  
4:00 13 Walt Disney  
4:15 13 Walt Disney  
4:30 13 Walt Disney  
4:45 13 Walt Disney  
5:00 13 Walt Disney  
5:15 13 Walt Disney  
5:30 13 Walt Disney  
5:45 13 Walt Disney  
6:00 13 Walt Disney  
6:15 13 Walt Disney  
6:30 13 Walt Disney  
6:45 13 Walt Disney  
7:00 13 Walt Disney  
7:15 13 Walt Disney  
7:30 13 Walt Disney  
7:45 13 Walt Disney  
8:00 13 Walt Disney  
8:15 13 Walt Disney  
8:30 13 Walt Disney  
8:45 13 Walt Disney  
9:00 13 Walt Disney  
9:15 13 Walt Disney  
9:30 13 Walt Disney  
9:45 13 Walt Disney  
10:00 13 Walt Disney  
10:15 13 Walt Disney  
10:30 13 Walt Disney  
10:45 13 Walt Disney  
11:00 13 Walt Disney  
11:15 13 Walt Disney  
11:30 13 Walt Disney  
11:45 13 Walt Disney  
12:00 13 Walt Disney  
12:15 13 Walt Disney  
12:30 13 Walt Disney  
12:45 13 Walt Disney  
1:00 13 Walt Disney  
1:15 13 Walt Disney  
1:30 13 Walt Disney  
1:45 13 Walt Disney  
2:00 13 Walt Disney  
2:15 13 Walt Disney  
2:30 13 Walt Disney  
2:45 13 Walt Disney  
3:00 13 Walt Disney  
3:15 13 Walt Disney  
3:30 13 Walt Disney  
3:45 13 Walt Disney  
4:00 13 Walt Disney  
4:15 13 Walt Disney  
4:30 13 Walt Disney  
4:45 13 Walt Disney  
5:00 13 Walt Disney  
5:15 13 Walt Disney  
5:30 13 Walt Disney  
5:45 13 Walt Disney  
6:00 13 Walt Disney  
6:15 13 Walt Disney  
6:30 13 Walt Disney  
6:45 13 Walt Disney  
7:00 13 Walt Disney  
7:15 13 Walt Disney  
7:30 13 Walt Disney  
7:45 13 Walt Disney  
8:00 13 Walt Disney  
8:15 13 Walt Disney  
8:30 13 Walt Disney  
8:45 13 Walt Disney  
9:00 13 Walt Disney  
9:15 13 Walt Disney  
9:30 13 Walt Disney  
9:45 13 Walt Disney  
10:00 13 Walt Disney  
10:15 13 Walt Disney  
10:30 13 Walt Disney  
10:45 13 Walt Disney  
11:00 13 Walt Disney  
11:15 13 Walt Disney  
11:30 13 Walt Disney  
11:45 13 Walt Disney  
12:00 13 Walt Disney  
12:15 13 Walt Disney  
12:30 13 Walt Disney  
12:45 13 Walt Disney  
1:00 13 Walt Disney  
1:15 13 Walt Disney  
1:30 13 Walt Disney  
1:45 13 Walt Disney  
2:00 13 Walt Disney  
2:15 13 Walt Disney  
2:30 13 Walt Disney  
2:45 13 Walt Disney  
3:00 13 Walt Disney  
3:15 13 Walt Disney  
3:30 13 Walt Disney  
3:45 13 Walt Disney  
4:00 13 Walt Disney  
4:15 13 Walt Disney  
4:30 13 Walt Disney  
4:45 13 Walt Disney  
5:00 13 Walt Disney  
5:15 13 Walt Disney  
5:30 13 Walt Disney  
5:45 13 Walt Disney  
6:00 13 Walt Disney  
6:15 13 Walt Disney  
6:30 13 Walt Disney  
6:45 13 Walt Disney  
7:00 13 Walt Disney  
7:15 13 Walt Disney  
7:30 13 Walt Disney  
7:45 13 Walt Disney  
8:00 13 Walt Disney  
8:15 13 Walt Disney  
8:30 13 Walt Disney  
8:45 13 Walt Disney  
9:00 13 Walt Disney  
9:15 13 Walt Disney  
9:30 13 Walt Disney  
9:45 13 Walt Disney  
10:00 13 Walt Disney  
10:15 13 Walt Disney  
10:30 13 Walt Disney  
10:45 13 Walt Disney  
11:00 13 Walt Disney  
11:15 13 Walt Disney  
11:30 13 Walt Disney  
11:45 13 Walt Disney  
12:00 13 Walt Disney  
12:15 13 Walt Disney  
12:30 13 Walt Disney  
12:45 13 Walt Disney  
1:00 13 Walt Disney  
1:15 13 Walt Disney  
1:30 13 Walt Disney  
1:45 13 Walt Disney  
2:00 13 Walt Disney  
2:15 13 Walt Disney  
2:30 13 Walt Disney  
2:45 13 Walt Disney  
3:00 13 Walt Disney  
3:15 13 Walt Disney  
3:30 13 Walt Disney  
3:45 13 Walt Disney  
4:00 13 Walt Disney  
4:15 13 Walt Disney  
4:30 13 Walt Disney  
4:45 13 Walt Disney  
5:00 13 Walt Disney  
5:15 13 Walt Disney  
5:30 13 Walt Disney  
5:45 13 Walt Disney  
6:00 13 Walt Disney  
6:15 13 Walt Disney  
6:30 13 Walt Disney  
6:45 13 Walt Disney  
7:00 13 Walt Disney  
7:15 13 Walt Disney  
7:30 13 Walt Disney  
7:45 13 Walt Disney  
8:00 13 Walt Disney  
8:15 13 Walt Disney  
8:30 13 Walt Disney  
8:45 13 Walt Disney  
9:00 13 Walt Disney  
9:15 13 Walt Disney  
9:30 13 Walt Disney  
9:45 13 Walt Disney  
10:00 13 Walt Disney  
10:15 13 Walt Disney  
10:30 13 Walt Disney  
10:45 13 Walt Disney  
11:00 13 Walt Disney  
11:15 13 Walt Disney  
11:30 13 Walt Disney  
11:45 13 Walt Disney  
12:00 13 Walt Disney  
12:15 13 Walt Disney  
12:30 13 Walt Disney  
12:45 13 Walt Disney  
1:00 13 Walt Disney  
1:15 13 Walt Disney  
1:30 13 Walt Disney  
1:45 13 Walt Disney  
2:00 13 Walt Disney  
2:15 13 Walt Disney  
2:30 13 Walt Disney  
2:45 13 Walt Disney  
3:00 13 Walt Disney  
3:15 13 Walt Disney  
3:30 13 Walt Disney  
3:45 13 Walt Disney  
4:00 13 Walt Disney  
4:15 13 Walt Disney  
4:30 13 Walt Disney  
4:45 13 Walt Disney  
5:00 13 Walt Disney  
5:15 13 Walt Disney  
5:30 13 Walt Disney  
5:45 13 Walt Disney  
6:00 13 Walt Disney  
6:15 13 Walt Disney  
6:30 13 Walt Disney  
6:45 13 Walt Disney  
7:00 13 Walt Disney  
7:15 13 Walt Disney  
7:30 13 Walt Disney  
7:45 13 Walt Disney  
8:00 13 Walt Disney  
8:15 13 Walt Disney  
8:30 13 Walt Disney  
8:45 13 Walt Disney  
9:00 13 Walt Disney  
9:15 13 Walt Disney  
9:30 13 Walt Disney  
9:45 13 Walt Disney  
10:00 13 Walt Disney  
10:15 13 Walt Disney  
10:30 13 Walt Disney  
10:45 13 Walt Disney  
11:00 13 Walt Disney  
11:15 13 Walt Disney  
11:30 13 Walt Disney  
11:45 13 Walt Disney  
12:00 13 Walt Disney  
12:15 13 Walt Disney  
12:30 13 Walt Disney  
12:45 13 Walt Disney  
1:00 13 Walt Disney  
1:15 13 Walt Disney  
1:30 13 Walt Disney  
1:45 13 Walt Disney  
2:00 13 Walt Disney  
2:15 13 Walt Disney  
2:30 13 Walt Disney  
2:45 13 Walt Disney  
3:00 13 Walt Disney  
3:15 13 Walt Disney  
3:30 13 Walt Disney  
3:45 13 Walt Disney  
4:00 13 Walt Disney  
4:15 13 Walt Disney  
4:30 13 Walt Disney  
4:45 13 Walt Disney  
5:00 13 Walt Disney  
5:15 13 Walt Disney  
5:30 13 Walt Disney  
5:45 13 Walt Disney  
6:00 13 Walt Disney  
6:15 13 Walt Disney  
6:30 13 Walt Disney  
6:45 13 Walt Disney  
7:00 13 Walt Disney  
7:15 13 Walt Disney  
7:30 13 Walt Disney  
7:45 13 Walt Disney  
8:00 13 Walt Disney  
8:15 13 Walt Disney  
8:30 13 Walt Disney  
8:45 13 Walt Disney  
9:00 13 Walt Disney  
9:15 13 Walt Disney  
9:30 13 Walt Disney  
9:45 13 Walt Disney  
10:00 13 Walt Disney  
10:15 13 Walt Disney  
10:30 13 Walt Disney  
10:45 13 Walt Disney  
11:00 13 Walt Disney  
11:15 13 Walt Disney  
11:30 13 Walt Disney  
11:45 13 Walt Disney  
12:00 13 Walt Disney  
12:15 13 Walt Disney  
12:30 13 Walt Disney  
12:45 13 Walt Disney  
1:00 13 Walt Disney  
1:15 13 Walt Disney  
1:30 13 Walt Disney  
1:45 13 Walt Disney  
2:00 13 Walt Disney  
2:15 13 Walt Disney  
2:30 13 Walt Disney  
2:45 13 Walt Disney  
3:00 13 Walt Disney  
3:15 13 Walt Disney  
3:30 13 Walt Disney  
3:45 13 Walt Disney  
4:00 13 Walt Disney  
4:15 13 Walt Disney  
4:30 13 Walt Disney  
4:45 13 Walt Disney  
5:00 13 Walt Disney  
5:15 13 Walt Disney  
5:30 13 Walt Disney  
5:45 13 Walt Disney  
6:00 13 Walt Disney  
6:15 13 Walt Disney  
6:30 13 Walt Disney  
6:45 13 Walt Disney  
7:00 13 Walt Disney  
7:15 13 Walt Disney  
7:30 13 Walt Disney  
7:45 13 Walt Disney  
8:00 13 Walt Disney  
8:15 13 Walt Disney  
8:30 13 Walt Disney  
8:45 13 Walt Disney  
9:00 13 Walt Disney  
9:15 13 Walt Disney  
9:30 13 Walt Disney  
9:45 13 Walt Disney  
10:00 13 Walt Disney  
10:15 13 Walt Disney  
10:30 13 Walt Disney  
10:45 13 Walt Disney  
11:00 13 Walt Disney  
11:15 13 Walt Disney  
11:30 13 Walt Disney  
11:45 13 Walt Disney  
12:00 13 Walt Disney  
12:15 13 Walt Disney  
12:30 13 Walt Disney  
12:45 13 Walt Disney  
1:00 13 Walt Disney  
1:15 13 Walt Disney  
1:30 13 Walt Disney  
1:45 13 Walt Disney  
2:00 13 Walt Disney  
2:15 13 Walt Disney  
2:30 13 Walt Disney  
2:45 13 Walt Disney  
3:00 13 Walt Disney  
3:15 13 Walt Disney  
3:30 13 Walt Disney  
3:45 13 Walt Disney  
4:00 13 Walt Disney  
4:15 13 Walt Disney  
4:30 13 Walt Disney  
4:45 13 Walt Disney  
5:00 13 Walt Disney  
5:15 13 Walt Disney  
5:30 13 Walt Disney  
5:45 13 Walt Disney  
6:00 13 Walt Disney  
6:15 13 Walt Disney  
6:30 13 Walt Disney  
6:45 13 Walt Disney  
7:00 13 Walt Disney  
7:15 13 Walt Disney  
7:30 13 Walt Disney  
7:45 13 Walt Disney  
8:00 13 Walt Disney  
8:15 13 Walt Disney  
8:30 13 Walt Disney  
8:45 13 Walt Disney  
9:00 13 Walt Disney  
9:15 13 Walt Disney  
9:30 13 Walt Disney  
9:45 13 Walt Disney  
10:00 13 Walt Disney  
10:15 13 Walt Disney  
10:30 13 Walt Disney  
10:45 13 Walt Disney  
11:00 13 Walt Disney  
11:15 13 Walt Disney  
11:30 13 Walt Disney  
11:45 13 Walt Disney  
12:00 13 Walt Disney  
12:15 13 Walt Disney  
12:30 13 Walt Disney  
12:45 13 Walt Disney  
1:00 13 Walt Disney  
1:15 13 Walt Disney  
1:30 13 Walt Disney  
1:45 13 Walt Disney  
2:00 13 Walt Disney  
2:15 13 Walt Disney  
2:30 13 Walt Disney  
2:45 13 Walt Disney  
3:00 13 Walt Disney  
3:15 13 Walt Disney  
3:30 13 Walt Disney  
3:45 13 Walt Disney  
4:00 13 Walt Disney  
4:15 13 Walt Disney  
4:30 13 Walt Disney  
4:45 13 Walt Disney  
5:00 13 Walt Disney  
5:15 13 Walt Disney  
5:30 13 Walt Disney  
5:45 13 Walt Disney  
6:00 13 Walt Disney  
6:15 13 Walt Disney  
6:30 13 Walt Disney  
6:45 13 Walt Disney  
7:00 13 Walt Disney  
7:15 13 Walt Disney  
7:30 13 Walt Disney  
7:45 13 Walt Disney  
8:00 13 Walt Disney  
8:15 13 Walt Disney  
8:30 13 Walt Disney  
8:45 13 Walt Disney  
9:00 13 Walt Disney  
9:15 13 Walt Disney  
9:30 13 Walt Disney  
9:45 13 Walt Disney  
10:00 13 Walt Disney  
10:15 13 Walt Disney  
10:30 13 Walt Disney  
10:45 13 Walt Disney  
11:00 13 Walt Disney  
11:15 13 Walt Disney  
11:30 13 Walt Disney  
11:45 13 Walt Disney  
12:00 13 Walt Disney  
12:15 13 Walt Disney  
12:30 13 Walt Disney  
12:45 13 Walt Disney  
1:00 13 Walt Disney  
1:15 13 Walt Disney  
1:30 13 Walt Disney  
1:45 13 Walt Disney  
2:00 13 Walt Disney  
2:15 13 Walt Disney  
2:30 13 Walt Disney  
2:45 13 Walt Disney  
3:00 13 Walt Disney  
3:15 13 Walt Disney  
3:30 13 Walt Disney  
3:45 13 Walt Disney  
4:00 13 Walt Disney  
4:15 13 Walt Disney  
4:30 13 Walt Disney  
4:45 13 Walt Disney  
5:00 13 Walt Disney  
5:15 13 Walt Disney  
5:30 13 Walt Disney  
5:45 13 Walt Disney  
6:00 13 Walt Disney  
6:15 13 Walt Disney  
6:30 13 Walt Disney  
6:45 13 Walt Disney  
7:00 13 Walt Disney  
7:15 13 Walt Disney  
7:30 13 Walt Disney  
7:45 13 Walt Disney  
8:00 13 Walt Disney  
8:15 13 Walt Disney  
8:30 13 Walt Disney  
8:45 13 Walt Disney  
9:00 13 Walt Disney  
9:15 13 Walt Disney  
9:30 13 Walt Disney  
9:45 13 Walt Disney  
10:00 13 Walt Disney  
10:15 13 Walt Disney  
10:30 13 Walt Disney  
10:45 13 Walt Disney  
11:00 13 Walt Disney  
11:15 13 Walt Disney  
11:30 13 Walt Disney  
11:45 13 Walt Disney  
12:00 13 Walt Disney  
12:15 13 Walt Disney  
12:30 13 Walt Disney  
12:45 13 Walt Disney  
1:00 13 Walt Disney  
1:15 13 Walt Disney  
1:30 13 Walt Disney  
1:45 13 Walt Disney  
2:00 13 Walt Disney  
2:15 13 Walt Disney  
2:30 13 Walt Disney  
2:45 13 Walt Disney  
3:00 13 Walt Disney  
3:15 13 Walt Disney  
3:30 13 Walt Disney  
3:45 13 Walt Disney  
4:00 13 Walt Disney  
4:15 13 Walt Disney  
4:30 13 Walt Disney  
4:45 13 Walt Disney  
5:00 13 Walt Disney  
5:15 13 Walt Disney  
5:30 13 Walt Disney  
5:45 13 Walt Disney  
6:00 13 Walt Disney  
6:15 13 Walt Disney  
6:30 13 Walt Disney  
6:45 13 Walt Disney  
7:00 13 Walt Disney  
7:15 13 Walt Disney  
7:30 13 Walt Disney  
7:45 13 Walt Disney  
8:00 13 Walt Disney  
8:15 13 Walt Disney  
8:30 13 Walt Disney  
8:45 13 Walt Disney  
9:00 13 Walt Disney  
9:15 13 Walt Disney  
9:30 13 Walt Disney  
9:45 13 Walt Disney  
10:00 13 Walt Disney  
10:15 13 Walt Disney  
10:30 13 Walt Disney  
10:45 13 Walt Disney  
11:00 13 Walt Disney  
11:15 13 Walt Disney  
11:30 13 Walt Disney  
11:45 13 Walt Disney  
12:00 13 Walt Disney  
12:15 13 Walt Disney  
12:30 13 Walt Disney  
12:45 13 Walt Disney  
1:00 13 Walt Disney  
1:15 13 Walt Disney  
1:30 13 Walt Disney  
1:45 13 Walt Disney  
2:00 13 Walt Disney  
2:15 13 Walt Disney  
2:30 13 Walt Disney  
2:45 13 Walt Disney  
3:00 13 Walt Disney  
3:15 13 Walt Disney  
3:30 13 Walt Disney  
3:45 13 Walt Disney  
4:00 13 Walt Disney  
4:15 13 Walt Disney  
4:30 13 Walt Disney  
4:

## "It's No Secret . . ."

My Mommy Always Uses  
Stork Diaper Service

Dial  
EM 3-2424

We'll give your  
drapes new  
color-sparkle

Presto, chango, and your  
drapes become like new  
when we clean them!

We clean your drapes so thoroughly, so  
gently, so carefully that we restore all of  
their original beauty and clarity of color.  
You'll appreciate the difference in our  
workmanship. Storage till fall, if you wish.

DON'T FORGET TO SEND US YOUR LAUNDRY  
FOR THAT SPARKLING CLEAN LOOK!



**TENNESSEE VALLEY**  
**Laundry & Dry Cleaners**

815 E. Tenn. St. AT 2-3911  
Pickup & Delivery or Cash and Carry  
CONVENIENT BRANCH LOCATIONS  
110 E. Tombigbee St. and 1224 N. Wood Ave., Florence  
Nashville and 5th St., Sheffield



## News Of GREENHILL

By Mrs. Mary McLaurine

The young people of the Methodist Church attended the ETI at Killen the past week. They were accompanied by Rev. William Smith, and Mr. and Mrs. Homer Green.

The Rogers High School PTA will meet April 19th at 7:30 in the school auditorium. New officers for the coming year will be elected. All members are urged to attend.

Miss Myra Ann Freeze of Greenhill and Billy Ray Perkins of Florence were married in the home of Rev. E. L. Nix in Florence, Friday.

A wedding shower honoring Mr. and Mrs. Bud Applegarth was held at the home of Mrs. Paul Springer Tuesday night.

Miss Eleanor Ann Springer of Greenhill and Robert Hill of Hampton, Tenn. were married Saturday in Florence.

Mr. and Mrs. Horace Harlan and children left for San Diego, California, Tuesday after spending several months here with relatives.

Mrs. Cletus Pettus is a patient at ECM Hospital.

Pfc. Glen Shelton is home on leave. He will return to New Jersey for overseas assignment.

Mr. and Mrs. Louie Gibbs and children of Lawrenceburg, Tenn. visited the Felix Moncreet family Sunday.

Reeder Green is convalescing at his home after undergoing eye surgery at ECM hospital.

Mr. and Mrs. Kenneth Freeze and children of Nashville were week end guests of Mrs. C. B. Freeze.

Mrs. John Henry Freeze is improving at home after several days in ECM Hospital.

Mr. and Mrs. Fred Allen and daughter have moved to Florence.

Mr. and Mrs. Fulton Scott and family of Chattanooga, Tenn. were week end guests of Mr. and Mrs. Joe Scott.

## News Of Rogersville

By Mrs. Oswald Waddell  
Phone CH 4-3256

### Personals:

Mr. and Mrs. O'neal Prince and son of Birmingham were week end visitors in the home of Mr. and Mrs. Slick Hoole.

In the Rex Roberson home for the week end were Mr. and Mrs. Hugh Nash and daughters of Oneonta.

A little son was born to Mr. and Mrs. John Roberson on Saturday, April 9. The Robersons have a daughter, Susan, also.

Mr. and Mrs. Bobby Ingram and family of Birmingham were guests in the Buford Howard, John Bedingfield and C. D. Ingram homes over the week end.

Frank Crumley is a patient in Coffee hospital.

Mr. and Mrs. L. E. Slaton plan spend the Easter holidays in East Chicago, Ill. in the home of their daughter, Mrs. Charles A. Patton, Mr. Patton and their daughter.

In Tuscaloosa for the week end where he was a guest of Morris McKee at the University was Jimmie Waddell.

Miss Roxie Ann Weathers of Decatur was the guest of her parents, Mr. and Mrs. Kelmer Weathers, for the week end.

A sunrise Easter services, participated in by the churches of Rogersville, will be at the Cumberland Presbyterian Church at 6:00.

## CLASSIFIED ADS

FOR RENT—10 acres of corn land. Contact: Mrs. Georgia Gresham, Route 1, Florence. Mar. 24, 31; Apr. 7, 14

FOR SALE: 1958 36' Two Bedroom House Trailer. See at Mockingbird Trailer Park, Lot No. 6. March 31; April 7, 14

HELP WANTED—Salesmen or Agents \$2.50 per hour or more for part or full time route work. Large repeat orders. Man or woman. Write McNESS CO., Box 2766, DeSoto Sta., Memphis 2, Tenn. 4/10,17

FOR RENT—10 acres corn land. Rt. 3 Lexington. See Mrs. L. D. Clemmons. 4/14, 21, 28; 5/5

## DON'T BE A DAY LATE

and  
\$5.00 SHORT  
Insure with SETH LOWE  
SETH LOWE AGENCY  
200 South Court St.  
Phone AT 2-6323 Florence

Mrs. Polk Comer.  
Brother and Mrs. Tom Estes and daughter of Greenwood, Miss., were overnight guests in the W. L. Dean home. On Sunday he preached at the church of Christ.

Socks which have passed the wearing stage may be used in many ways. They are good to apply silver polish, for mops, dust cloths, and for applying wax or oil.

FORT HOOD, Tex. — Army Pvt. William F. Jenkins, son of Mr. and Mrs. Floyd L. Jenkins, 211 Porter St., Florence, recently was assigned to the 2d Armored Division at Fort Hood, Tex.

Jenkins, a jeep driver in Company D of the division's 37th Armored, entered the Army in July 1959 and received basic training at Fort Jackson, S. C.

He attended Coffee High School.

## ARE YOU COVERED?

COMPARE THE COVERAGE  
OF OUR HOMEOWNERS  
POLICY WITH YOUR  
PRESENT INSURANCE

### GET MORE PROTECTION AT LESS COST!

Here is an example of the coverage you get with our homeowners policy. \$8,000 fire and windstorm on house, \$3,200 fire and windstorm on household furnishings, \$3,200 theft on premises, \$1,000 theft off premises, \$800 additional living expenses, \$10,000 personal liability and \$250 medical pay and damage to property of others. The cost on country homes with no farming operations is only \$55.00 for a frame house for the first year and \$32.00 for a brick veneer. Each home gets a \$5.00 discount for the next two years. Pay by the month. A frame, \$6.10 for 10 months, a brick veneer, \$5.50.

FOR ALL INSURANCE NEEDS . . . SEE US FIRST  
**MUSGROVE INSURANCE AGENCY**

111 East Mobile St.

Florence, Ala.

## Come to Church for Services

"A FAMILY THAT WORSHIPS TOGETHER — STAYS TOGETHER"

Now upon the first day of the week, very early in the morning, they came unto the sepulchre, bringing the spices which they had prepared, and certain others with them.

2 And they found the stone rolled away from the sepulchre.

3 And they entered in, and found not the body of the Lord Jesus.

4 And it came to pass, as they were much perplexed thereabout, behold, two men stood by them in shining garments.

5 And as they were afraid, and bowed down their faces to the earth, they said unto them, Why seek ye the living among the dead?

6 He is not here, but is risen: remember how he spake unto you when he was yet in Galilee, 7 Saying, The Son of man must be delivered into the hands of sinful men, and be crucified, and the third day rise again.

**THE WORDS OF ETERNAL LIFE**

There was a day when some of the disciples of Jesus became discouraged and walked no more with Him.

But when the Master asked the twelve, "Will ye also go away?" Simon Peter answered, "Lord, to whom shall we go? Thou hast the words of eternal life."

Never underestimate spiritual intuition! Peter sensed long before the first Easter that Christ's mission was to lead men to eternal life!

As Easter approaches, millions of men and women realize a spiritual intuition. It calls them to their churches to worship the Risen Christ. It prompts them to embrace with new fervor convictions that sometimes have become casual. Cherish that hunger for spiritual renewal. Fortify it as Peter did with an honest evaluation of man's helplessness apart from God. To Whom shall we go? Only Christ offers the Truth and Life which are eternal.

**THE CHURCH FOR ALL . . . ALL FOR THE CHURCH**

The Church is the greatest factor on earth for the building of character and good citizenship. It is a storehouse of spiritual values. Without a strong Church, neither democracy nor civilization can survive. There are four sound reasons why every person should attend services regularly and support the Church. They are: (1) For his own sake. (2) For his children's sake. (3) For the sake of his community and nation. (4) For the sake of the Church itself, which needs his moral and material support. Plan to go to church regularly and read your Bible daily.

Day	Book	Chapter	Verses
Sunday	John	8	66-71
Monday	Matthew	19	16-22
Tuesday	John	3	14-21
Wednesday	John	12	12-33
Thursday	Matthew	26	26-75
Friday	Luke	22	1-49
Saturday	Titus	2	11-15

This Advertisement Is Contributed to the Church by the Following Patriotic Business Establishments:

- |                                   |  |                              |
|-----------------------------------|--|------------------------------|
| ALABAMA OIL CO.                   | FARMERS BANK, ANDERSON                                 | FLORENCE LUMBER CO.          |
| ALABAMA-TENNESSEE NATURAL GAS CO. | FARMERS & MERCHANTS BANK, WATERLOO                     | N. FLORENCE PHARMACY         |
| BANK OF LEXINGTON                 | FIRST FEDERAL SAVINGS & LOAN ASSOCIATION               | FLORENCE SEED & FEED CO.     |
| THE BOOTERY                       | FIRST NATIONAL BANK                                    | JORDAN REALTY COMPANY        |
| CAMPBELL MOTORS                   | J. T. FLAGG KNITTING CO. Division of Flagg-Utica Corp. | KILLEN'S GENERAL MERCHANDISE |
| DARBY'S SRELL SERVICE             | FLORENCE COCA-COLA BOTTLING CO.                        | MEFFORD'S, JEWELERS          |
| DIXIE TIRE CO.                    | FLORENCE IMPLEMENT CO.                                 | MILNER DRUG STORE            |
| EAST LAUDERDALE BANKING CO.       |  | ROGERS DEPARTMENT STORE      |
|                                   |  | ROSENBAUM THEATERS           |
|                                   |  | THE SHERWIN-WILLIAMS CO.     |

## Classified Directory

### LEGAL FORMS

Warranty Deeds • Real Estate Mortgages • Sales Contracts • Lease Sales • Leases • Bill of Sale Notes • Advance Liens • And Many Others  
**THE FLORENCE HERALD**  
110-112 N. SEMINARY ST. AT 2-0641

### SHOES

SHOES FOR THE ENTIRE FAMILY AT . . .  
30 TO 80% SAVINGS!  
**GABLE'S SHOES**  
121 EAST TENNESSEE ST. FLORENCE, ALA.  
Use Our Convenient Lay-a-way Plan

### TIRES

COMPLETE TIRE SERVICE  
**BATSON'S OK RUBBER WELDERS**  
605 E. TENNESSEE ST. FLORENCE, ALA.  
Money Back Guarantee On All Work

### Furnace Filters

Permanent, Any Size For Any Make  
Heating or Cooling System, \$3.75 up.  
**YOUNG-PITTMAN CO.**  
600 S. Court St. AT 2-8771

### AUTO LIABILITY INSURANCE

\$25,000 and 50,000 bodily injury limits, \$10,000 property damage, and \$2,000 medical payments per person. Down Payment \$8.78 with 9 monthly payments of \$5.72. Rates for farmers approx. 35% less.  
**MUSGROVE INSURANCE AGENCY**  
111 E. Mobile St. AT 2-4971

### GUITARS

**E. E. FORBES & SONS PIANO CO.**  
HEADQUARTERS FOR MARTIN, FENDER AND GIBSON GUITARS  
The Finest Guitars on the Market  
SMALL DOWN PAYMENT — EASY TERMS  
109 SOUTH COURT ST. FLORENCE

### DRUGS

WE SPECIALIZE IN PRESCRIPTIONS  
**CITY DRUG STORE**  
COR. TENN. & SEMINARY STS. DIAL AT 2-1762 FLORENCE

### ON-THE-FARM FEED SERVICE

We will bring our Feedmobile to your farm, saving you time, labor and money. Our regular routes are filling rapidly . . . contact us right away.  
**FLORENCE SEED AND FEED CO.**  
Across From Post Office AT 2-9201 N. Seminary St.

### SECRETARIES

ARE IN GREAT DEMAND  
Get Complete Training At  
**Larimore Business College**  
315 SOUTH COURT ST. DIAL AT 2-5732

### FABRICS

DRAPERY • SLIP COVER • SEWING NOTIONS  
DRESS MATERIAL AND TRIMMING  
**MILL ENDS STORE**  
AT 2-8462 North Florence

### JEWELRY

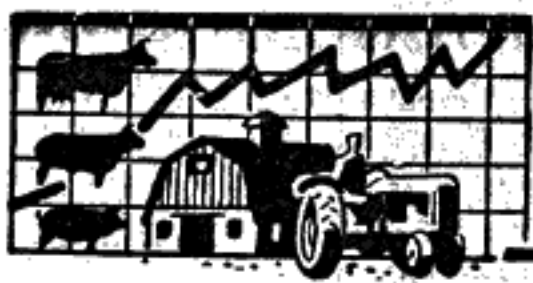
• WATCHES • DIAMOND RINGS  
DISCOUNT FOR CASH  
**YOUNG'S JEWELRY**  
106 S. SEMINARY ST. FLORENCE

### SIGNS

• NO HUNTING • NO TRESPASSING • POSTED  
• FOR RENT • NO SMOKING • AND MANY OTHERS  
**THE FLORENCE HERALD**  
110-112 N. SEMINARY ST. PHONE AT 2-0641

### TV RADIO REPAIRS

SALES • SERVICE • REPAIRS  
Pioneer Radio and TV Dealers  
Our Service Is The Best Available—Prices Reasonable  
**BROWN'S RADIO-TV CENTER**  
102 N. Seminary St. Dial AT 2-2071 Florence



# Farm Review and Forecast



## Know Right Color Of Quality Pork

Have you looked everywhere for red pork chops or roasts? Extension Meats Marketing Specialist Ray Cavender explains that you might as well stop looking because good quality, fresh pork is not red. And even extra amounts

of iron and copper in the pig's diet won't make the meat red. According to Cavender, good quality pork should be pinkish-gray. But because most fresh pork cuts come from well finished animals less than seven months old, the cuts are usually tender and juicy although the color may not be the typical pinkish-gray.

Let The Herald Print It!

## New Clothes For Easter Not New

The first Easter Parades weren't the fashion shows Irving Berlin wrote about, but the celebration of a "new life."

The custom of wearing new clothes on Easter Sunday dates from the early days of Christianity, when newly baptized Christians were clothed in garments of white linen.

Baptism has always been closely associated with Easter. Just as the Resurrection represents the new life of Christ, so baptism represents the initiation of the believer into a new life.

In the early Church, Lent was the annual season of preparation for baptism, and the sacrament was celebrated on Holy Saturday during the Easter Vigil.

Eventually all Christians began to dress up for a joyful parade through town... much to the joy of today's clothing manufacturers.

In fact, it might have been an early advertising executive who coined the English rhyme, "At Easter let your clothes be new, or else be sure you will it rue!"

## USE SOAP AND WATER ON PAINTED WOODWORK

Spring house cleaning is contagious, and most women contact the fever at the first signs of warm, sunshiny weather.

And one job homemakers will want to do this spring is wash painted woodwork. For best results, this can be done with a solution of warm water and mild detergent, says Alice Peavy Extension home furnishings specialist.

But there is a certain procedure to follow. Start at the floor and wash upward, using circular

## COUNTRY PLAYERS

LES CARROLL

Have you ever dusted off old pop records that were your favorite in younger days and played them for your children, only to find they "send" them—OUT?

Styles in pop music change with each generation, have a brief popularity then fade as do we. However Sacred Music retains its appeal to each generation and never loses its freshness.

You will find such music in three excellent new LP's. "Sing A Hymn With Me" by Tennessee Ernie Ford (Capitol) is a beautifully sung collection of familiar hymns, with words and music included. The McGuire Sisters'

competition. From Honolulu comes the haunting, dreamy music of the South Seas in a fine album, "Hawaii Calls." And for the electrified version of the Hawaiian Guitar, "Steel Guitar" by Speedy West, is an exciting album, showcasing the modern techniques of this popular instrument (both Capitol).

For tops in country music, "The Pick of the Country" (RCA) is an album of 12 all-time favorites by top artists chosen by overseas servicemen, that makes fine listening. "The Lonesome Sound of Hank Williams" is a good collection of 12 previously unreleased recordings by Hank, that will be greatly treasured by his many fans (MGM).

Other fine releases are: "From a Kiss to the Blues" (Country Johnny Mathis, D); "Smiling Bill McCall" (Johnny Cash, Columbia); "The Joke's On You" (Jimmy Martin, Decca); "My Destiny" (Wanda Jackson, Capitol); "That a-Boy, Willie" (Benny Barnes, Mercury); "Sunflower Song" (Eddie Noack, D); "Take Me Lord" (Rex Allen, Decca); "Please Help Me, I'm Falling" (Rose Maddox, Capitol); "John's Back in Town" (Bill Mack, D); "Sentenced to Die" (Wilburn Bros., Decca); "Your Old Used to Be" (Faron Young, Capitol); and "Lonesome Road Blues" (Jimmy Skinner, Mercury).

singing is very inspiring in a Coral album, "In Harmony With Him." And for Country Gospel singing, and playing, "Songs of Glory" by Earl Scruggs and Lester Flatt is outstanding (Columbia).

Barbershop fans will find Decca's "Sweet Adelines" delightful, containing songs by the top five feminine quartet 1959 Medalist Winners, recorded at the Tucson

strokes to prevent streaking. Learn to use a sponge in each hand at the same time to get the job done more quickly.

And to keep water from running down your arms, wrap a cloth around your wrist, adds the Auburn specialist.

## Save Time By Planned Shopping

Did you ever lose your shopping cart in a crowded grocery store? Because grocery shopping can be a tiring chore, plan your trip ahead of time, advises Extension Consumer Education Specialist Dorothy Overbey. Most of the food buyers wait until the last of the week to purchase their groceries. So it is a good idea to go earlier in the week. And shop in the morning rather than afternoon or evening to avoid crowds.

To save time make out a list according to the store plan, says the Auburn University specialist. For instance, if fresh fruits and vegetables come first in the store, put them at the top of the list. Then list other items in the order they occur as you walk up and down the aisles. This way you will end up with less "just noticed" items that you don't need anyway.

## PORTABLE CALF PENS PREVENT DISEASE SPREAD

Almost all Alabama dairymen use portable pens to prevent spreading diseases and parasites in young calves.

When the calf is 24 hours old, it may be placed in the pen and kept there for 3 or 4 months, says Extension Dairyman John Parrish. The pen should be placed at the bottom of a slop and moved uphill to clean ground each week. And to prevent internal parasites such as coccidia and worms, says Parrish, be sure there have been no cattle on this ground for a period of four to 12 months. Enough space for 25 pens and progressive movement for two years is provided by a two-acre plot.

These pens are built to give some protection from the weather, so they help prevent colds and pneumonia. A half-roof keeps out rain, and a sheet of plastic or tin on two sides acts as a windbreak.

According to Parrish, the idea for the portable pens originated at the Agricultural Research Laboratory at Auburn. The men responsible for the idea are Dr. L. R. Davis and Dr. D. A. Porter.

ALABAMA PEACH COUNCIL ORGANIZED AT MEETING

Alabama peach growers made plans for a peach council during their recent meeting held in Chilton County. — rapidly becoming Alabama's peach marketing center.

The council hopes to improve the quality of the peach, to have a unified promotional and advertising program, and to provide enough sellers for the producers. They also plan to have standardization and uniformity of the product, package, brand name, size, and varieties and more orderly marketing and pricing.

Five counties taking part in the peach council are Chilton, Autauga, Bibb, Jefferson, and Etowah.

KEEP FOODS FROZEN AT ZERO DEGREES

"Best buy" frozen foods may quickly lose their quality if proper storage is not provided.

Therefore, it is best to store the products at zero degrees in order to retain natural freshness and nutritive value, advises Consumer Education Specialist Dorothy Overbey.

If there is no temperature indicator on your freezer, use a small portable thermometer, says the Extension specialist. This method of freezing will guarantee a better taste and a more attractive appearance when foods are served.

If icing is too stiff, add hot water a drop at a time and mix carefully.

## News Of POWELL

By Frances Pedigo

PTA: The Powell PTA met Monday night at seven o'clock for their regular monthly meeting. The meeting was called to order by the president, Osben Echols. Bible reading and prayer was given by Ray J. T. Word. After the business part of the meeting had been taken care of, the entertainment committee took charge. They played many games, such as Bingo, spelling race, relays and many others. Afterward refreshments were served and the meeting was adjourned.

Personal: Visiting Dianne Camp Thursday night were: Wanda Rossen, Betty Ann Nunley, Frances Kay Owens, Betty Ann McConnell and Judy Bailey. The girls enjoyed a weiner roast and a marshmallow toast.

Mr. Gilbert Jackson is ill at his home. He hasn't returned to work at the time of this writing.

Freddie McConnell is in the Jackson's Hospital at Lester. He underwent an appendectomy Saturday morning and is improving nicely.

Funeral services were conducted for Miss Lila Chambers, eighty-four, Saturday afternoon at two o'clock, at the Bethel Baptist Church.

Burial was held in the Mince cemetery.

Funeral services were held at the Methodist Church in Anderson for Oscar H. Jackson, sixty, of Birmingham.

For many years, before moving to Birmingham, he lived at Anderson.

Visiting Mrs. Louella Williams Sunday were: Mr. and Mrs. Eroy Williams and children of Birmingham, Mr. and Mrs. Edgar Williams and Sandra and Debra of Florence and Charles Williams also of Birmingham.

Mrs. Louella Williams and Charles returned to Birmingham with Mr. and Mrs. Eroy Williams.

Bobby White is in the Jackson's Hospital at Lester at the time of this writing.

A party was held at Powell School Friday afternoon. The losers had to give the winners of the ticket selling match a party. The

## Birmingham

## THE PICK-BANKHEAD

23RD ST. AND FIFTH AVE., NO.

Completely Air-Conditioned

Rooms with bath from \$5.00

• NO CHARGE FOR CHILDREN

• RADIO AND TELEVISION

• FREE PARKING

• COFFEE SHOP

Newly Remodeled

GENE WHITE, Mgr.  
Alpine 1-3231

FREE TELETYPE RESERVATIONS FOR ALL ALBERT PICK HOTELS

children played many games and enjoyed refreshments afterwards. The Home Demonstration Club held its regular monthly meeting at the home of Mrs. Judy Newbern. The meeting was postponed from Monday to Wednesday because of deaths in the community. Because of the deaths, only six members were present. Refreshments were served and the meeting was adjourned until next month.

Visiting the Dillard McConnell's Sunday were Mr. and Mrs. V. G. Rossen, and children, Mr. and Mrs. C. W. Gullett, Mr. and Mrs. Cecore Cockrell, Mr. and Mrs. John Luffman, Mr. and Mrs. J. B. Berryhill, Mr. and Mrs. Vernon Herston, and Mr. and Mrs. Henry Smith.

Mr. and Mrs. Otto William's, Sandra, Kenneth, Dianne, Mr. and Mrs. James Bullard and Cindy motored to Birmingham, Sunday afternoon.

Dillard McConnell returned to Nashville Monday morning. Eighty-five were present for Sunday school at the Bethel Baptist Church with others arriving for church. Fifty-three were present for Training Union.

LET THE HERALD PRINT IT!

FORT BLISS, Tex.—Army Pvt. Audie E. White, son of Mr. and Mrs. Audie M. White, 915 Sherrod Ave., Florence, is receiving the final phase of six months active military training under the Reserve Forces Act program at Fort Bliss, Tex. The training is scheduled to be concluded April 11.

## You'll Find Distinguished Gifts for Every Special Event



## GREEN STAMP REDEMPTION CENTERS

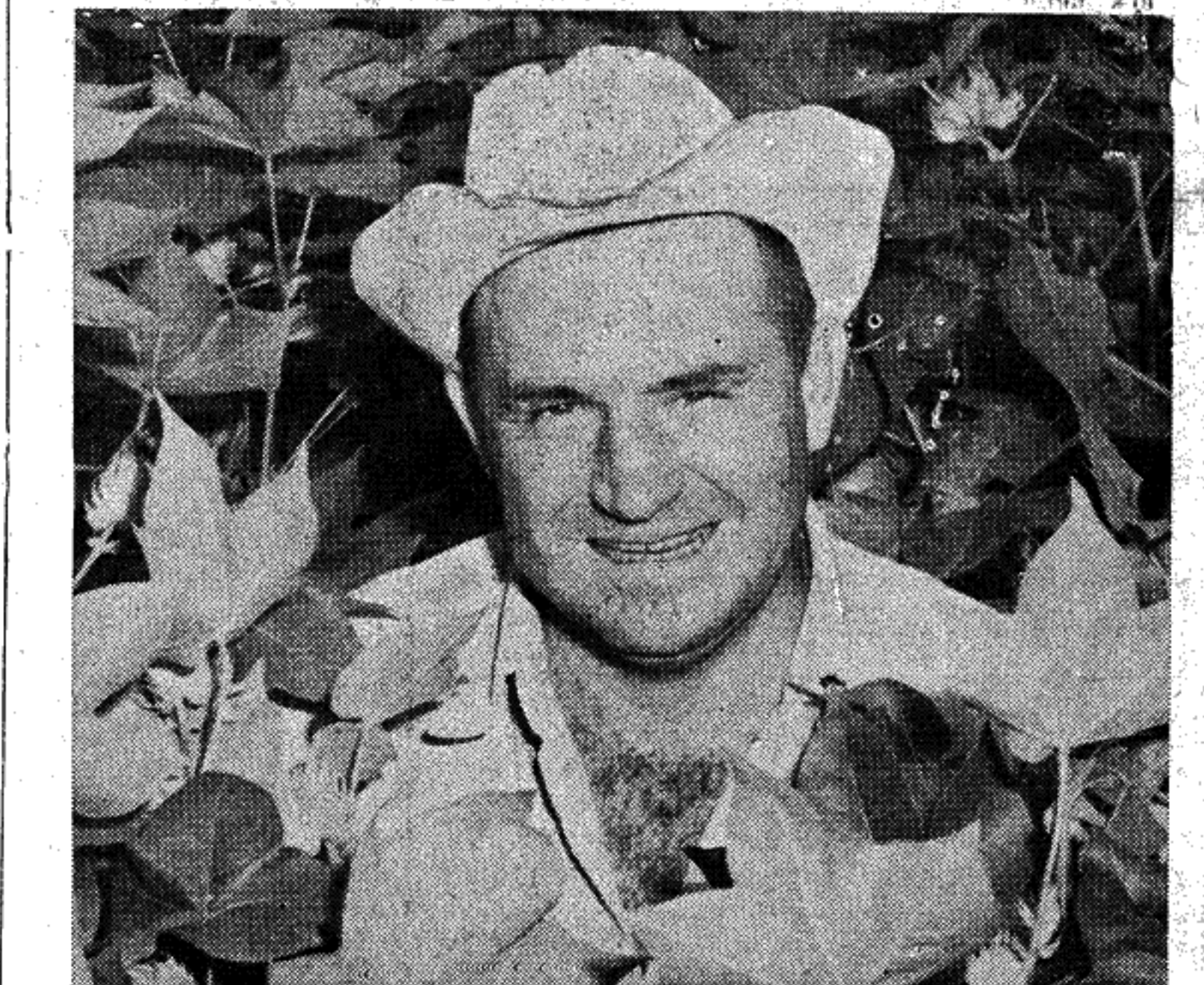


Distinguished merchandise in S&H Green Stamp Redemption Centers make outstanding gifts for special occasions, like weddings, birthdays, anniversaries and showers.

More than 1,500 nationally-known quality products give you a wonderful gift selection.

So, when you wish to remember someone with a present that will be treasured and appreciated, don't forget your S&H Green Stamps! If there's no redemption center nearer you than 20 miles away, you can order your gifts by mail with your filled stamp books from the pages of the beautiful new S&H catalog.

ALABAMA DIVISION  
The Sperry and Hutchinson Company  
419 Comer Building • Birmingham 3, Alabama  
THE SPERRY AND HUTCHINSON COMPANY • ESTABLISHED 1896



## "ORTHOCIDE" SOIL TREATER X GAVE ME A STRONG, UNIFORM STAND

A. E. Yelvington of Clarendon, Ark. says, "Even with low germination seed, I got a strong uniform stand using ORTHOCIDE Soil Treater X. I left 8 rows untreated and you could really see the difference. In the early stages these 8 rows had more skips and dying cotton. In spite of the fact that we planted 3 or 4 days later than the year before, the cotton was a good 3 weeks earlier." ORTHOCIDE Soil Treater X creates a protected zone in the furrow—allows tender seedlings to develop normally despite cold, wet, infected soil.



Helping the World Grow Better

California Spray-Chemical Corp., A subsidiary of California Chemical Co. • P.O. Box 6495, Memphis, Tenn.

## LOCAL AUTHORIZED DEALERS:

A. J. Buffer Gin, Oakland, Ala.  
Oakland Gin Co., Oakland, Ala.  
Lauderdale County Exchange, Florence, Ala.  
City Milling Co., Tusculumbia, Ala.  
Colbert County Exchange, Tusculumbia, Ala.  
Pruitt Gin Co., Rt. 1, Tusculumbia, Ala.  
Fennel Gin Co., Leighton, Ala.  
E. P. King Gin Co., Leighton, Ala.  
Smith Seed & Feed Co., Florence, Ala.

See your local ORTHO Dealer or nearest ORTHO Fieldman today!

## SHOALS THURS., FRI. & SAT.

## THE ALL-TIME GREATEST COMEDY CAST!

## THE ALL-TIME FUNNIEST COMEDY FILM!

HERE'S A DREAM COME TRUE—THE MOST WONDERFUL COMEDIANS THE SCREEN HAS KNOWN IN THEIR BEST MOVIE MOMENTS—A FABULOUS FEATURE OF NOTHING BUT BELLY LAUGHS!



CHARLIE CHAPLIN • LAUREL and HARDY • BUSTER KEATON  
HARRY LANGDON • BEN TURPIN • FATTY ARBUCKLE  
WALLACE BEERY • GLORIA SWANSON • MABEL NORMAND  
THE KEYSTONE COPS • CHARLIE CHASE • EDGAR KENNEDY  
THE SENNETT GIRLS • CHESTER CONKLIN • ANDY CLYDE

## ROBERT YOUNGSON'S

## WHEN COMEDY WAS KING

Written and Produced by ROBERT YOUNGSON—Winner of 2 Academy Awards and 6 Academy Award nominations

Century-Fox

## Deaths

## Shade Peden

Services for Shade Peden, 79,

Route 1, Cloverdale, who died Tuesday at Kelly's Nursing Home in Haleyville following an extended illness, were held at the Kilburn church of Christ Wednesday at 2:30 p.m. with Edward Clark officiating. Burial followed in Oak Hill Cemetery with Morrison-Elkins directing.

ANNOUNCING THE OPENING OF  
THE KNIT SHOP

Gladys Bland Juanita Chambers  
209 North Pine St., Phone EM 3-1532  
PRINGLE SETS AND NEEDLE POINT  
Complete Stock Knitting Supplies and Yarns  
REGISTER NOW FOR PRIZE AWARD SATURDAY  
No Obligation To Buy — Not Necessary To Be Present To Win

## KINZER'S HAS

EASTER  
STYLES  
to match your "dress up" moodSHOP KINZER'S FOR  
PRE-EASTER BARGAINS

## SUITS 20% OFF!

by Northbrook & University Town  
55% Dacron Polyester—45% Wool. Latest  
Spring & Summer styles. Handsome 3 But-  
ton Suits in Dark & Medium Shades.

\$29.95 to \$59.95

## Easter Special

55% DACRON—45% WOOL  
2 PANTS SUIT \$45.95

SLACKS  
20% OFF!

Dacron-Wool, Rayon-Acetate Nylon, Wash-  
N-Wear. Solids, shadow checks and stripes.  
Ivy or pleated models.

\$5.95 to \$14.95

## SHIRTS

A real value in finely tailored men's  
short sleeve dress shirts. Button-down  
batiste or Air-weave.

\$2.99

Short sleeve sport shirts. Colorful pat-  
terns in new attractive motif trims.

\$2.99-\$4.95

## HATS by LEE and DISNEY

Spring Felts & Straws  
In Your Style and Color

All Price Ranges

## SHOES 20% OFF

IN ALL THE WANTED STYLES AND COLORS  
By W. L. DOUGLAS \$10.95-\$12.95  
By CROSBY-SQUARE \$12.95-\$16.95

TIES, BELTS, SOCKS AND ALL  
ACCESSORIES FOR EASTER

BIG SELECTION CONTINENTAL  
SPORT COATS & SLACKS 20% OFF

KINZER'S  
MEN'S STORE

106 N. SEMINARY

DOWNTOWN FLORENCE

DEEB CAN HELP  
YOU CUT THE  
HIGH COST OF  
BUILDING!

A TWO BEDROOM HOME  
ONLY \$1595

NO MONEY  
DOWN  
•  
UP TO 6  
YEARS TO  
PAY

Deeb Construction Co. will build a home on your lot for a small down payment, regardless of size or location of your property. It's so easy, many folks wonder why they have paid rent for years. Extras available with your home are sheet-rock, light fixtures, bathroom fixtures and electric or gas hotwater heater. Mail the coupon today for full information, or better yet, visit our display homes. Office hours, 9 a.m. to 5 p.m. Monday through Saturday.

A THREE BEDROOM DEEB HOME . . . ONLY . . . \$2395  
BUY NOW — FINISH THE INTERIOR YOURSELF

Mail This Coupon For Full Information

DEEB CONSTRUCTION CO.  
P. O. Box 378, Sheffield, Ala.

( ) Please have Representative call on me.

( ) Please send me all information on all Deeb quality built homes.

Name \_\_\_\_\_ State \_\_\_\_\_

Address \_\_\_\_\_

City \_\_\_\_\_

## DEEB Construction Company

FIVE MILES SO. OF SHEFFIELD, HWY. 43

"Covering the South Like the Dew"

P. O. Box 387, Sheff.

EV 3-2443 Collect

News Of  
ANDERSON

By Mrs. Myrtle McGraw

Mr. Peden, a native of Lauderdale County, was a retired farmer and a member of the church of Christ.

He is survived by his wife, Mrs. Josephine Peden, Florence; three sons, Dudley C. Peden, Florence, Abernethy Peden, Florence and Robert Peden, also of Florence; four daughters, Mrs. J. S. Richardson, Florence, Mrs. Robert J. Richardson, Florence, Mrs. A. J. McDaniel, Lexington and Mrs. Tom Keeton, Collinswood, Tenn.; sixteen grandchildren and one great-grandchild.

## Miss Delila Chambers

Services for Miss Delila Chambers, 84, Rt. 1, Minor Hill, Tenn., who died Friday at the home of her niece, Mrs. J. H. Hollingsworth following a brief illness, were conducted Saturday at 2 p.m. at the Bethel Baptist Church with burial following in the Dement cemetery.

Miss Chambers was a member of the Rogersville Cumberland Presbyterian Church.

She is survived by nieces and nephews.

Spry of Florence directing.

## Rev. Orville Kelley

Services for Rev. Orville W. Kelley, 60, Rt. 4, Florence, who died Thursday morning at Rhea County School, following a heart attack, were conducted Sunday at 2:30 p.m. at Wesley's Chapel with Rev. Bert Goodwin and Dr. Minor Triplett officiating. Burial followed in the adjoining cemetery.

Rev. Kelley was pastor of the Barton and Mt. Zion churches and a member of the North Alabama Methodist Conference and belonged to the 100F Cypress Lodge. He had been a resident of Lauderdale County for the past 15 years.

He is survived by his wife, Mrs. Vera Kelley; a son, William O. Kelley, Jr., West Palm Beach, Fla.; two grandchildren.

Morrison-Elkins directing.

## Jesse McClure

Services for Jesse McClure, 65, 1428 Willis Avenue, Florence, who died at ECM Hospital Wednesday after a three months illness, will be held at the Sherrod Avenue church of Christ Friday at 2 p.m. with John D. Cox officiating. Burial will follow in Florence cemetery.

Mr. McClure, a lifelong resident of Lauderdale County, was a charter member of the Sherrod Avenue church of Christ and had been employed for the Townsend Confectionery Company for the past 19 years. He was also engaged in part time farming in the St. Florian community.

Survivors include his wife, Mrs. Mary Lena Billingsley McClure; three sons, Louis Edward McClure, Memphis, Captain John C. McClure, Whiteman, AFB, Mo., Chester McClure, Florence; a dau-

CAR INSURANCE  
DUE?

Save with  
State Farm's  
low insurance  
rates for  
careful drivers.  
See me.

## JACK BREWER

AGENT

AT 2-2234

101 E. College Florence



Home Office: Bloomington, Illinois 59-22

## Mrs. Lizzie Balentine

Services for Mrs. Lizzie Balentine, 86, 1014 Park Street, Florence, who died Tuesday at 11 a.m., will be held this afternoon at Murphy's Chapel at 2 p.m. with burial following in the church cemetery.

Mrs. Balentine, a lifelong resident of Lauderdale County, was a member of the Freewill Baptist Church.

She is survived by two sisters, Mrs. George Balentine, Florence, and Mrs. Leona Smith, Waterloo.

## A. C. Carroll

Services for A. C. (Ace) Carroll, 56, 468 1/2 North Court Street, Florence, who died at 2 a.m. Tuesday at ECM Hospital following a brief illness, will be conducted this afternoon at 3 p.m. at Morrison-Elkins Chapel with Curtis Platt officiating. Burial will follow in Greenview Memorial Park.

Mr. Carroll, a native of Lewis County, Tenn., had lived in Florence for the past several years. He was employed at ECM Hospital as chief maintenance engineer for the past nine years.

He is survived by his wife, Mrs. Eloise Lovelace Carroll; a daughter, Mrs. Donald T. Holiman, Florence; a son, Robert M. Carroll, Florence; his father, J. M. Carroll, Hohenwald, Tenn.; two brothers, Claude Carroll, Hohenwald, and Joe Carroll, Pittsburgh, Pa.; a sister, Mrs. Peter Nagg, Trenton, Mich.; five grandchildren.

## CARD OF THANKS

We wish to take this means of expressing our deep appreciation to those kind and dear people who so graciously and generously gave of their time to console us in the many ways they did during the tragic passing of our dear mother and daddy.

Signed:  
Albert McGraw  
Lynn McGraw  
Mavis Crumley  
Ouida Ezell

dream come true for Truett, as ever since he was a small boy that has been his one desire to get into big league baseball. He has been in Tampa, Florida but will be leaving for Topeka very soon.

Mr. and Mrs. Otto Williams and children and Mr. and Mrs. James Bullard and Cindy all spent Sunday with relatives in Birmingham.

Mr. and Mrs. Maurice Jackson and baby and Mrs. Arlie Jackson of Nashville, Tenn. visited relatives here this past week end and attended the funeral of Oscar Jackson Sunday.

The Anderson Home Demonstration Club began its clean-up week Monday. The ladies painted parking lanes, cleaned out alleys and did numerous other jobs. They wish to thank the merchants and others who helped in the campaign, and ask that all try to keep Anderson clean. Ross Eddy and Mobley and Grigsby donated the paint which was used.

Johnnie Hunt is confined to the Decatur General hospital and is very ill.

Mrs. Wynette Butler, Mrs. Ethel Goodman, and Mrs. Lucille Bullard have completed their three months schooling in the Decatur Trade School and are now taking training in the ECM Hospital in Florence.

There were an estimated 102 million cattle in the United States on January 1, 1960—an all-time high.

Political  
Announcements

The following Political Announcements have been paid for by the candidates whose names are affixed thereto.

## FOR BOARD OF EDUCATION

I hereby announce my candidacy for member of the Lauderdale County Board of Education subject to the action of the voters in the Democratic Primary, May 3, 1960. Your vote and support will be appreciated.

A. D. RAY, JR.

## FOR MEMBER.

I hereby announce my candidacy for member of the Lauderdale County Board of Education subject to the action of the voters in the Democratic Primary May 3, 1960. Your vote and support will be appreciated.

LAWRENCE GOINS

## FOR TAX COLLECTOR

I hereby announce my candidacy for Lauderdale County Tax Collector subject to the action of the voters in the Democratic Primary, May 3, 1960. Your vote and support will be appreciated.

WEAVER FUQUA, JR.

## FOR TAX COLLECTOR

I hereby announce my candidacy for the office of Tax Collector of Lauderdale County subject to the will of the voters in the Democratic Primary May 3, 1960. Your vote and support will be appreciated.

HAROLD KOONCE

## FOR TAX COLLECTOR

I hereby announce my candidacy for the office of Tax Collector of Lauderdale County subject to the action of the voters in the Democratic Primary, May 3, 1960. Your vote and support will be appreciated.

NOLAN PHILLIPS

## FOR TAX COLLECTOR

I hereby announce my candidacy for Lauderdale County Tax Collector subject to the action of the voters in the Democratic Primary May 3, 1960. Your support will be deeply appreciated.

VERNA H. TUCKER

## FOR TAX ASSESSOR

I hereby announce my candidacy for the office of Tax Assessor of Lauderdale County subject to the action of the voters in the Democratic Primary May 3, 1960. Your vote and support will be appreciated.

B. P. (Junior) LOVELACE

## FOR TAX ASSESSOR

I hereby announce my candidacy for the office of Tax Assessor subject to the will of the voters in the Democratic Primary, May 3, 1960. Your vote and support will be appreciated.

MRS. HELEN L. MURPHY

## FOR SUPT. OF EDUCATION

I hereby announce my candidacy for the office of Lauderdale County Superintendent of Education subject to the will of the voters in the Democratic Primary May 3, 1960. Your vote and support appreciated.

ALLEN THORNTON

## FOR COMMISSIONER, District 2

I hereby announce my candidacy for member of the Lauderdale County Court of Commissioners, District 2, subject to the action of the voters in the Democratic Primary May 3, 1960. Your vote and support will be appreciated.

JOE C. WILSON

## FOR COMMISSIONER, District 2

I hereby announce my candidacy for member of the Lauderdale County Court of Commissioners subject to the action of the voters in the Democratic Primary, May 3, 1960. Your vote and influence appreciated.

CORBERT K. SMITH

## FOR COMMISSIONER, District 4

I hereby announce my candidacy for member of the Lauderdale County Court of Commissioners, District 4, subject to the action of the voters in the Democratic Primary, May 3, 1960. Your vote and support will be appreciated.

GEORGE MANGUM

## FOR COMMISSIONER, District 4

I hereby announce my candidacy for member of the Lauderdale County Court of Commissioners, District 4, subject to the action of the voters in the Democratic Primary, May 3, 1960. Your vote and support will be appreciated.

NOLAN ROBINSON

## FOR COMMISSIONER, District 4

I hereby announce my candidacy for member of the Lauderdale County Court of Commissioners, District 4, subject to the will of the voters in the Democratic Primary, May 3, 1960. Your vote and support will be appreciated.

ANDY WHITE

## FOR COMMISSIONER, District 4

I hereby announce my candidacy for member of the Lauderdale County Court of Commissioners subject to the action of the voters in the Democratic Primary, May 3, 1960. Your vote and support will be appreciated.

PERCY WRIGHT, JR.

## FOR COMMISSIONER, District 4

I hereby announce my candidacy for member of the Lauderdale County Court of Commissioners, District 4, subject to the action of the voters in the Democratic Primary, May 3, 1960. Your vote and support will be sincerely appreciated.

SAM THRASHER

## Let The Herald Print It!

## FREE PLANS

TO HELP YOU BUILD

OR REMODEL WITH

GOLD BOND

ASBESTOS CEMENT

BUILDING PRODUCTS

Whether you're building a

pole barn or a new home we

can help you SAVE

MONEY. GOLD BOND

ASBESTOS CEMENT

products have many advan-

tages, such as

• FIREPROOF

• ROTPROOF, RUSTPROOF

• RATPROOF, TERMITE-

PROOF

• WEATHERPROOF

• EASY TO HANDLE

• EASY TO CLEAN

SEE US BEFORE YOU

BUILD OR REMODEL

We've got FREE "How-to-

do-it" plans and instructions

for using GOLD BOND

Asbestos Cement products

in pole barns, machine sheds

and hundreds of other uses.

Whether you're doing the

work yourself or hiring it

done, be sure to use GOLD

BOND products so you'll

enjoy their many money-

saving benefits.

SEE US TODAY!

RICHARDSON

LUMBER CO.

406 E. Tenn. St. AT 2-4541

Florence, Ala.

## FOR JUSTICE OF THE PEACE

Beat 10  
I hereby announce my candidacy for Justice of the Peace, Beat 10, subject to the will of the voters in the Democratic Primary May 3, 1960. Your vote and support will be appreciated.

H. F. KOONCE

## FOR COMMISSIONER, District 4

I hereby announce my candidacy for member of the Lauderdale County Court of Commissioners, District 4, subject to the will of the voters in the Democratic Primary, May 3, 1960. Your vote and support will be appreciated.

W. R. (Bill) DALTON

## FOR CONSTABLE, Beat 10

I hereby announce my candidacy for Constable, Beat 10, subject to the action of the voters in the Democratic Primary, May 3, 1960. Your vote and support will be appreciated.

JOHNNY F. OLIVER

## FOR COMMISSIONER, District 4

I hereby announce my candidacy for member of the Lauderdale County Court of Commissioners, District 4, subject to the will of the voters in the Democratic Primary, May 3, 1960. Your vote and support will be appreciated.

W. T. WILLIAMS

there's less cleaning  
to do...with  
a clean-cooking  
electric  
range!



Smart homemakers know that kitchens stay

clean longer when you cook electrically. Electric

ranges are as clean as they look . . . bright, white

and shiny. They cook without the messy smoke

and soot of older, out-dated cooking methods.

There's very little cleaning up to do after

cooking. Surface units are self-cleaning . . .

spilled foods burn away.

Make the switch now to a clean cooking electric

range. See your favorite electric

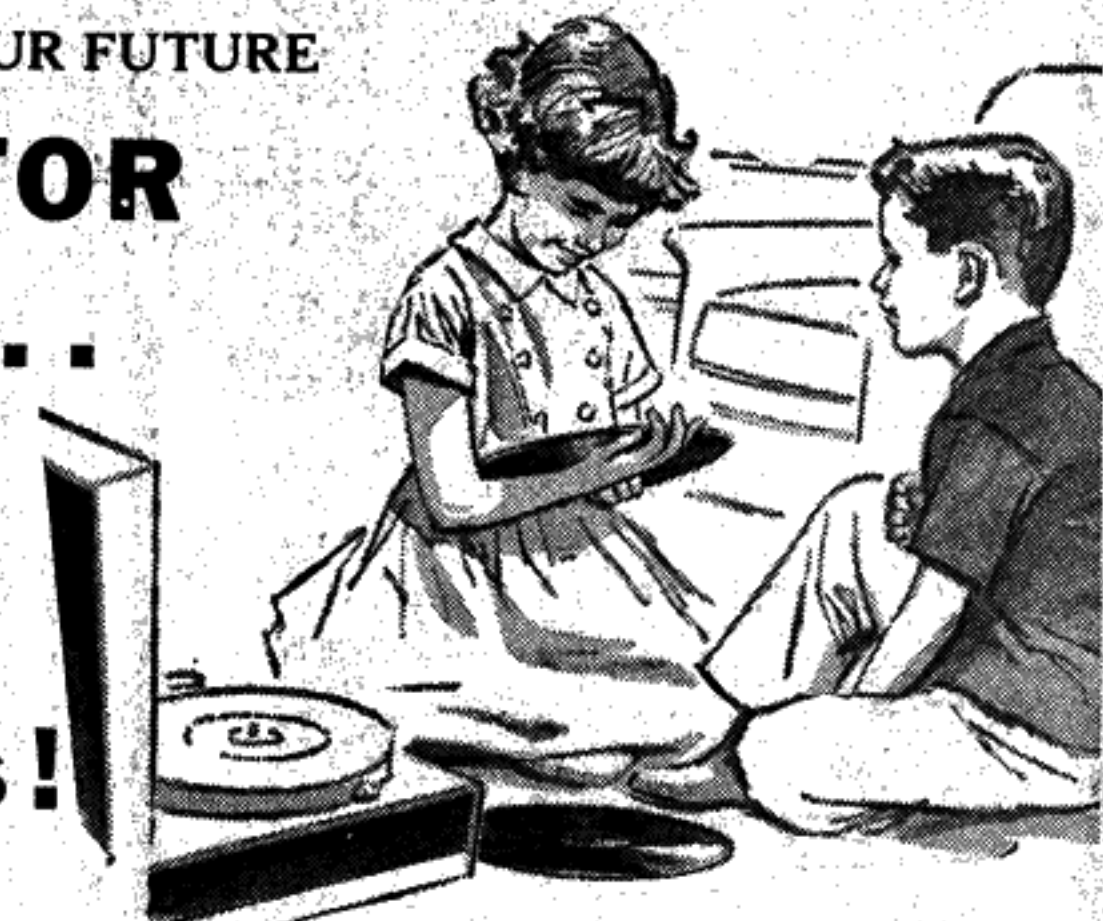
appliance dealer today.

Department of

Electricity

City of Florence

## THEY ARE YOUR FUTURE

PLAN FOR  
THEM . . .with  
College  
Savings!

YOUR CHILDREN'S FUTURE is YOUR future. Their accomplishments, your satisfaction for good advance planning. Start college funds growing with our COLLEGE SAVINGS PLAN, today. When the time arrives for college entrance exams, your pocketbook will be ready with the tuition.

Remember, to prepare your child for his future, prepare yourself first. Stop in now and save yourself the college budget "squeeze" later. Your regular savings plus our liberal earnings will assure your youngster's education.

118 E. MOBILE ST.

7 PTS. SHOPPING CENTER



118 E. MOBILE STREET, FLORENCE, ALABAMA. SEVEN POINTS SHOPPING CENTER.